

Lewisburg Area School District



Data Analysis Report Spring 2007 Assessments

***Spring 2007 Terra Nova Results
Spring 2007 PSSA Results
2006-2007 SAT Results***

September 27, 2007

This report provides a review of the assessment data and information regarding the Lewisburg Area School District for the 2006-2007 School Year.

Contents

Testing Variables for Consideration.....	2
Terra Nova National Achievement Test Results.....	3
State PSSA Results.....	7
Assessment Trends and Comparisons.....	26
SAT Data.....	41
Conclusions	46

For more information about this report please contact:

Mark D. DiRocco, Ph.D.
Superintendent
1951 Washington Ave., Dept. C.O.
Lewisburg PA 17837
(570) 522-3204

Cathy Moser, M. Ed.
Supervisor of Curriculum and Instruction
1951 Washington Avenue, Dept. C.O.
Lewisburg PA 17837
(570) 522-3255

Variables to Consider When Viewing the 2007 Data Results

- **The PSSA Exams were administered approximately two weeks earlier than the previous two years.**
- **Lewisburg started school one week later than the previous two years. Thus students had fewer days of instruction prior to the exam than in past years.**
- **Our special education and economically disadvantaged populations increased by 10% in comparison to the previous year.**
- **This is the first year that Kindergarten and first grade students were administered the Terra Nova National Achievement Test.**

Terra Nova Achievement Test

Compares our students' performance with a national sample administered to all students in grades K, 1, 2, 9 and 10.

Terminology

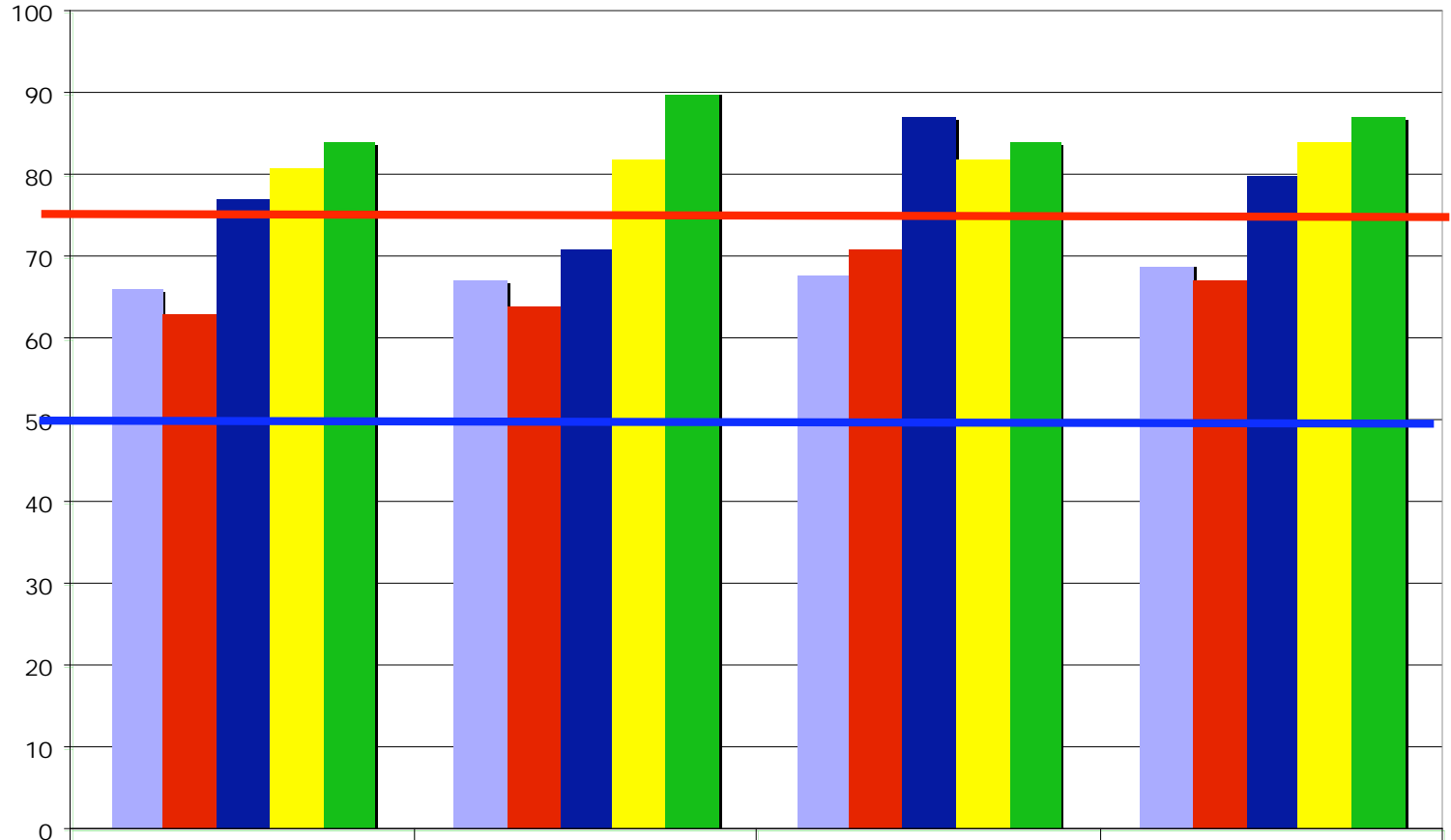
Percentile: Shows how our students scored on the test in comparison to a national sample.

Example: A student scoring a 50 did as well or better than 50% of the students taking the test.

Progress: Students progressing at the normal rate should score at the 50th percentile. Students progressing significantly above average will score at the 75th percentile or higher.

Note: The testing service has provided an analysis of how student performance correlates with the PSSA performance categories of Advanced, Proficient, Basic, and Below Basic.

Terra Nova National Percentile Performance 2007



	Reading	Language	Math	Total Battery
Kindergarten Percentile	66	67	68	69
Grade 1 Percentile	63	64	71	67
Grade 2 Percentile	77	71	87	80
Grade 9 Percentile	81	82	82	84
Grade 10 Percentile	84	90	84	87

Note: The dark line at the 50th percentile indicates the score that students should attain if they are progressing normally. The dark line at the 75th percentile indicates that scores above this mark are considered significantly above national average.

Grades 1 & 2 Terra Nova Performance Levels 2007

Grade 1	Read	Read		Grade 1	Math	Math
	%	Students			%	Students
Below Basic	17%	25		Below Basic	5%	7
Basic	12%	17		Basic	14%	20
Proficient	38%	56		Proficient	36%	53
Advanced	33%	49		Advanced	46%	67
Total	100%	147		Total	100%	147
Grade 2	Read	Read		Grade 2	Math	Math
	%	Students			%	Students
Below Basic	12%	17		Below Basic	3%	4
Basic	14%	21		Basic	10%	14
Proficient	34%	49		Proficient	27%	39
Advanced	40%	59		Advanced	61%	89
Total	100%	146		Total	100%	146

Grades 9 & 10 Terra Nova Performance Levels 2007

Grade 9	Read	Read		Grade 9	Math	Math
	%	Students			%	Students
Below Basic	10%	16		Below Basic	13%	22
Basic	11%	18		Basic	16%	27
Proficient	36%	59		Proficient	35%	57
Advanced	44%	72		Advanced	35%	58
Total	100%	165		Total	100%	164
Grade 10	Read	Read		Grade 10	Math	Math
	%	Students			%	Students
Below Basic	8%	11		Below Basic	10%	13
Basic	14%	19		Basic	22%	30
Proficient	30%	40		Proficient	29%	39
Advanced	48%	65		Advanced	39%	53
Total	100%	135		Total	100%	135

Pennsylvania System of State Assessment

PSSA

In 2007 the state required students in grades 3, 4, 5, 6, 7, 8 and 11 to take the PSSA math and reading exams. Grades 5, 8, and 11 were also administered the state writing exam.

This was the second year that the PSSA was administered in grades 4, 6, and 7. This is the first year that data from these grades was used to calculate Adequate Yearly Progress (AYP).

The PSSA data is the only information used to assess the Adequate Yearly Progress of our students and evaluate our schools for the No Child Left Behind Law.

NCLB Goals

<i>Grad. Year</i>	<i>Reading</i>	<i>Math</i>
<i>2019</i>	<i>100%</i>	<i>100%</i>
<i>2018</i>	<i>100%</i>	<i>100%</i>
<i>2017</i>	<i>100%</i>	<i>100%</i>
<i>2016</i>	<i>100%</i>	<i>100%</i>
<i>2015</i>	<i>100%</i>	<i>100%</i>
<i>2014</i>	<i>100%</i>	<i>100%</i>
<i>2013</i>	<i>91%</i>	<i>89%</i>
<i>2012</i>	<i>81%</i>	<i>78%</i>
<i>2011</i>	<i>72%</i>	<i>67%</i>
<i>2010</i>	<i>63%</i>	<i>56%</i>
<i>2009</i>	<i>63%</i>	<i>56%</i>
<i>2008</i>	<i>63%</i>	<i>56%</i>
<i>2007</i>	<i>54%</i>	<i>45%</i>

AYP Status from PDE Web Site

District/School	Met AYP	2003	2004	2005	2006	2007
LASD	Y	Made AYP	Made AYP	Made AYP	Made AYP	Made AYP
Kelly	Y	Made AYP	Made AYP	Made AYP	Made AYP	Made AYP
Linntown	Y	Made AYP	Made AYP	Made AYP	Made AYP	Made AYP
Middle School	Y	Made AYP	Made AYP	Made AYP	Made AYP	Made AYP
High School	Y	Made AYP	Made AYP	Made AYP	Made AYP	Made AYP

Lewisburg has made AYP every year since the inception of the state's evaluation system!

2007 PSSA Reading Performance Levels

Lewisburg Ranks in the Top 10% of the 501 PA School Districts in Overall Performance

Grade	Percent Scoring Advanced & Proficient	IU Rank of 17 Districts	State Rank of 501 Districts	
3	80	4th	200th	Top 40%
4	83	1st	98th	Top 20%
5	73	3rd	110th	Top 22%
6	82	1st	39th	Top 8%
7	87	1st	22nd	Top 5%
8	90	1st	45th	Top 9%
11	84	1st	25th	Top 5%
All Grades Combined	83	1st	48th	Top 10 %

2007 PSSA Math Performance Levels

Lewisburg Ranks in the Top 10% of the 501 PA School Districts in Overall Performance

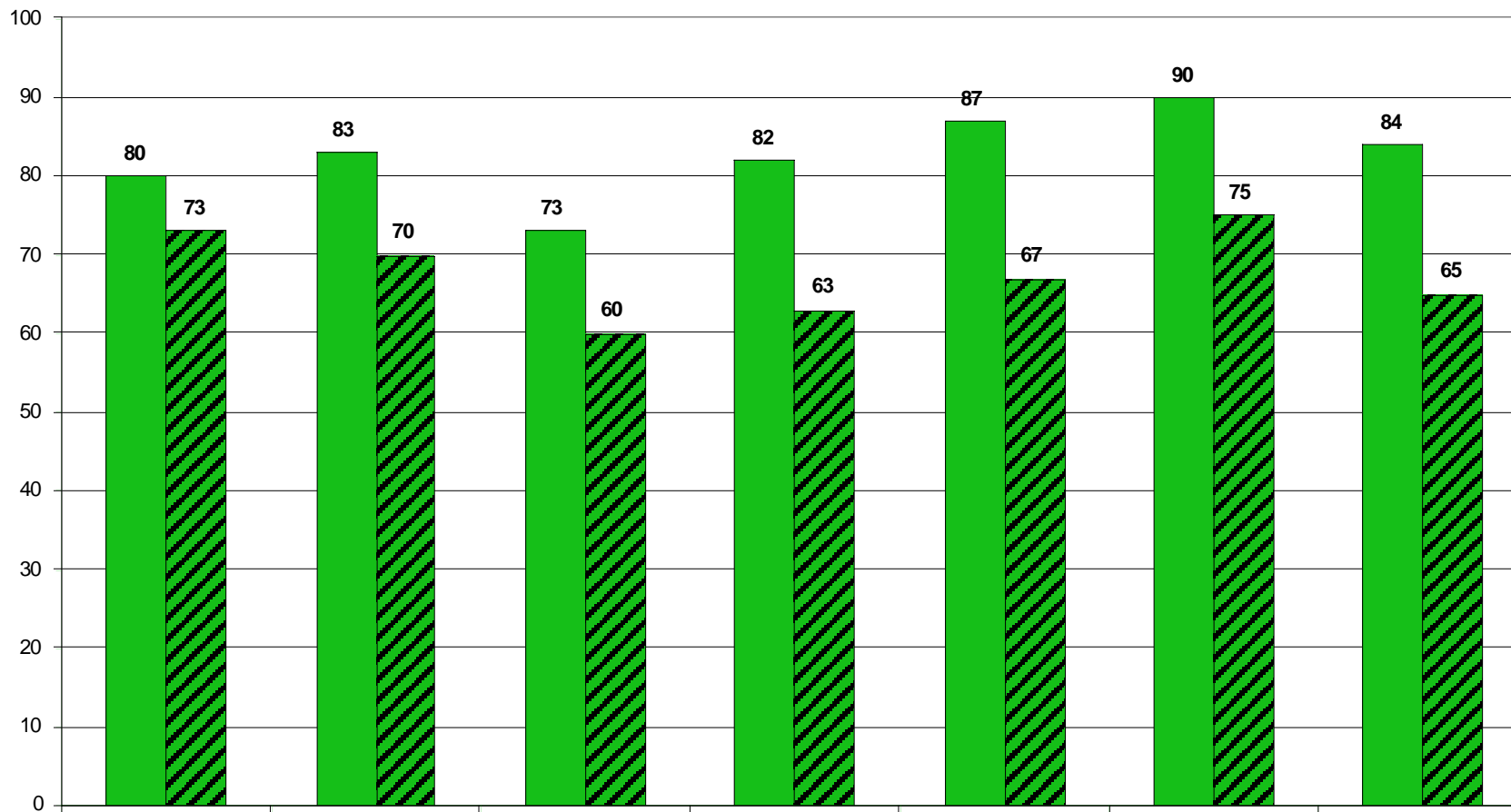
Grade	Percent Scoring Advanced & Proficient	IU Rank of 17 Districts	State Rank of 501 Districts	
3	90	3rd	117th	Top 24%
4	94	1st	32nd	Top 7%
5	82	3rd	148th	Top 30%
6	87	3rd	52nd	Top 11%
7	84	3rd	64th	Top 13%
8	90	1st	16th	Top 4%
11	69	1st	76th	Top 16%
All Grades Combined	85	1st	38th	Top 8%

2007 PSSA Reading Scores

Percentage Advanced & Proficient

Grade	LASD	State	NCLB Req.
	Reading	Reading	Reading
3	80	73	54
4	83	70	54
5	73	60	54
6	82	63	54
7	87	67	54
8	90	75	54
11	84	65	54

2007 PSSA Reading Scores - Percentage Advanced & Proficient Lewisburg Scores Compared to State Average



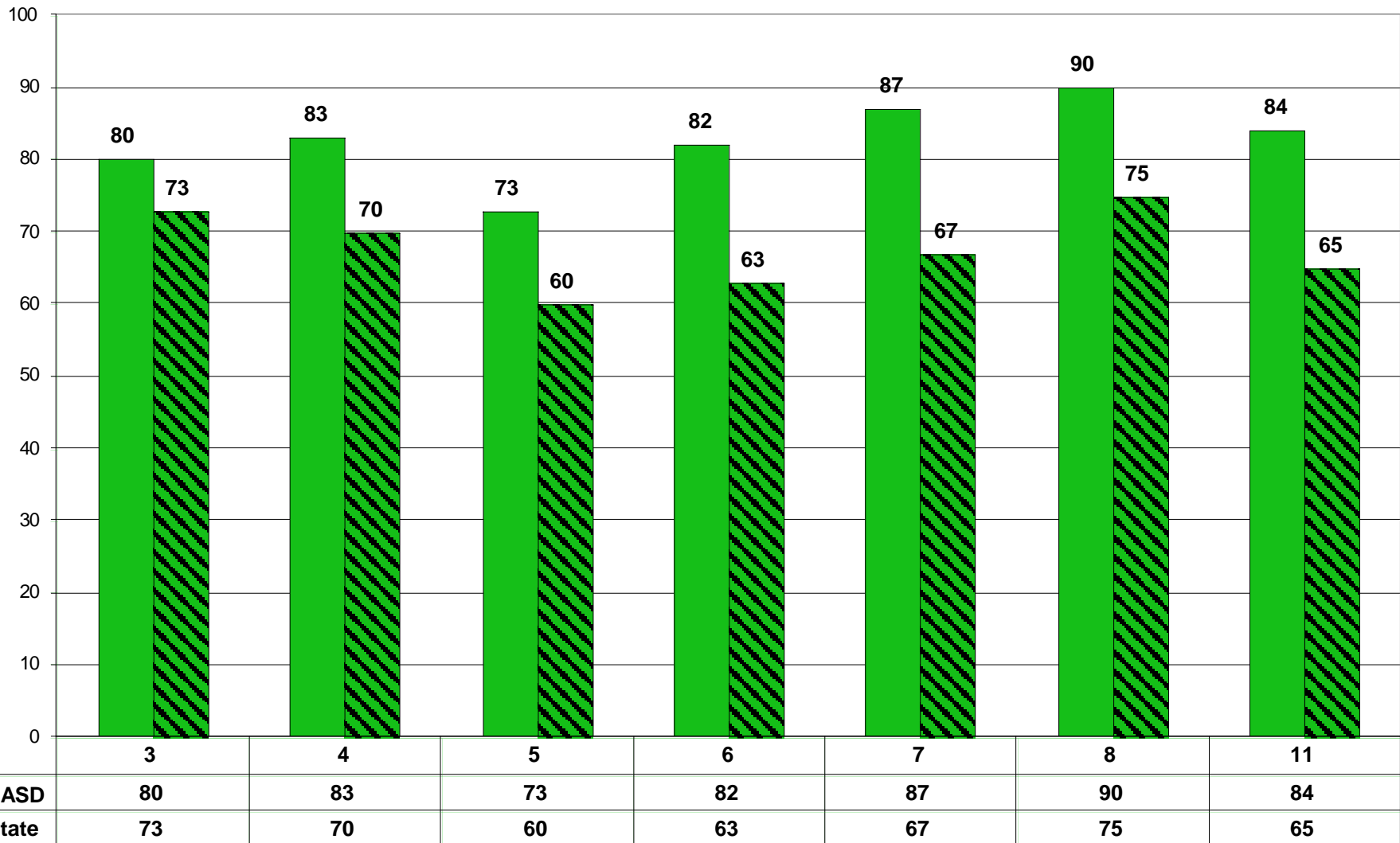
■ LASD	80	83	73	82	87	90	84
▨ State	73	70	60	63	67	75	65

2007 PSSA Math Scores

Percentage Advanced & Proficient

Grade	LASD	State	NCLB Req.
	Math	Math	Math
3	90	78	45
4	94	78	45
5	82	71	45
6	87	70	45
7	84	67	45
8	90	68	45
11	69	54	45

2007 PSSA Reading Scores - Percentage Advanced & Proficient Lewisburg Scores Compared to State Average

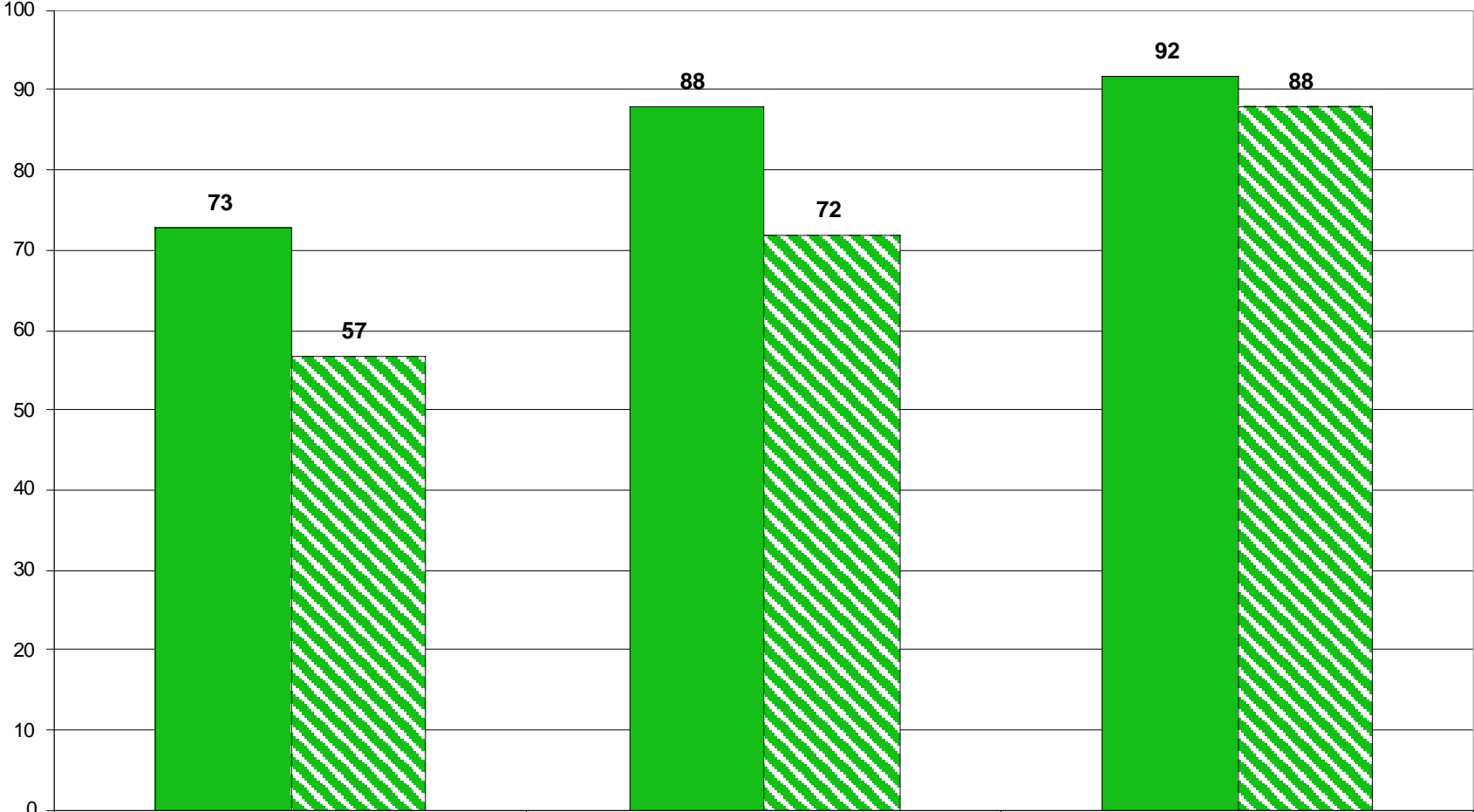


Writing Performance Levels 2007

Advanced and Proficient

	LASD	State
Grade	Writing	Writing
5	73	57
8	88	72
11	92	88

Writing Performance Levels 2007



	Grade	5	8
■ LASD	73	88	92
▨ State	57	72	88

2007 PSSA Performance Levels Grades 3 and 4

Gr. 3	Read	Read			Math	Math	
	Kelly	State	Students		Kelly	State	Students
Below Basic	9%	15%	11	Below Basic	1%	6%	1
Basic	10%	12%	13	Basic	9%	15%	11
Proficient	40%	51%	50	Proficient	48%	45%	60
Advanced	40%	22%	50	Advanced	42%	34%	52
Total	100%	100%	124	Total	100%	100%	124

Gr. 4	Read	Read			Math	Math	
	Linntown	State	Students		Linntown	State	Students
Below Basic	6%	15%	8	Below Basic	4%	13%	5
Basic	11%	15%	16	Basic	3%	9%	4
Proficient	26%	38%	37	Proficient	23%	31%	32
Advanced	57%	32%	80	Advanced	71%	47%	101
Total	100%	100%	141	Total	100%	100%	142

2007 PSSA Performance Levels Grade 5

Gr. 5	Read	Read			Math	Math	
	Linntown	State	Students		Linntown	State	Students
Below Basic	9%	20%	11	Below Basic	6%	12%	7
Basic	18%	20%	21	Basic	13%	17%	15
Proficient	43%	39%	51	Proficient	30%	30%	36
Advanced	31%	21%	37	Advanced	52%	41%	62
Total	100%	100%	120	Total	100%	100%	120

Gr. 5	Writing	Writing	
	Linntown	State	Students
Below Basic	0%	1%	0
Basic	27%	42%	33
Proficient	70%	56%	85
Advanced	2%	1%	3
Total	100%	100%	121

2007 PSSA Performance Levels Grades 6 & 7

Gr. 6	Reading				Math		
	MS	State	Students		MS	State	Students
Below Basic	10%	17%	12	Below Basic	8%	14%	9
Basic	8%	20%	9	Basic	5%	16%	6
Proficient	29%	33%	34	Proficient	18%	30%	21
Advanced	53%	31%	62	Advanced	69%	40%	81
Total	100%	101%	117	Total	100%	100%	117

Gr. 7	Reading				Math		
	MS	State	Students		MS	State	Students
Below Basic	6%	16%	9	Below Basic	6%	18%	9
Basic	7%	17%	10	Basic	10%	15%	14
Proficient	20%	30%	28	Proficient	20%	26%	29
Advanced	67%	36%	95	Advanced	63%	41%	90
Total	100%	99%	142	Total	100%	100%	142

2007 PSSA Performance Levels Grade 8

Gr. 8	Reading				Math		
	MS	State	Students		MS	State	Students
Below Basic	3%	12%	4	Below Basic	3%	17%	5
Basic	7%	13%	10	Basic	6%	15%	8
Proficient	15%	29%	21	Proficient	27%	28%	38
Advanced	76%	46%	108	Advanced	64%	40%	92
Total	100%	100%	143	Total	100%	100%	143

Gr. 8	Writing		
	MS	State	Students
Below Basic	0%	3%	0
Basic	12%	25%	17
Proficient	71%	61%	102
Advanced	17%	11%	24
Total	100%	100%	143

2007 PSSA Performance Levels Grade 11

Gr. 11	Reading				Math		
	HS	State	Students		HS	State	Students
	%	%			%	%	
Below Basic	6%	19%	9	Below Basic	13%	27%	21
Basic	10%	15%	16	Basic	17%	20%	28
Proficient	29%	36%	47	Proficient	33%	29%	53
Advanced	56%	29%	90	Advanced	37%	24%	60
Total	100%	99%	162	Total	100%	100%	162

Gr. 11	Writing		
	HS	State	Students
Below Basic	1%	1%	1
Basic	6%	11%	9
Proficient	74%	80%	118
Advanced	20%	8%	32
Total	100%	100%	160

PSSA Scaled Scores 2007

Grade 3	Scaled Score	Kelly	State	Diff	Significant
	Reading	1380	1330	50	Yes
	Math	1360	1310	50	Yes
Grade 4	Scaled Score	Linn	State	Diff	Significant
	Reading	1480	1350	130	Yes
	Math	1550	1420	130	Yes
Grade 5	Scaled Score	Linn	State	Diff	Significant
	Reading	1400	1320	80	Yes
	Math	1480	1430	50	Yes
	Writing	1370	1270	100	Yes

PSSA Scaled Scores 2007

Grade 6	Scaled Score	MS	State	Diff	Significant
	Reading - 6th	1480	1340	140	Yes
	Math - 6th	1580	1420	160	Yes
Grade 7	Scaled Score	MS	State	Diff	Significant
	Reading - 7th	1520	1370	150	Yes
	Math - 7th	1590	1420	170	Yes
Grade 8	Scaled Score	MS	State	Diff	Significant
	Reading - 8th	1590	1440	150	Yes
	Math - 8th	1530	1390	140	Yes
	Writing - 8th	1490	1380	110	Yes

PSSA Scaled Scores 2007

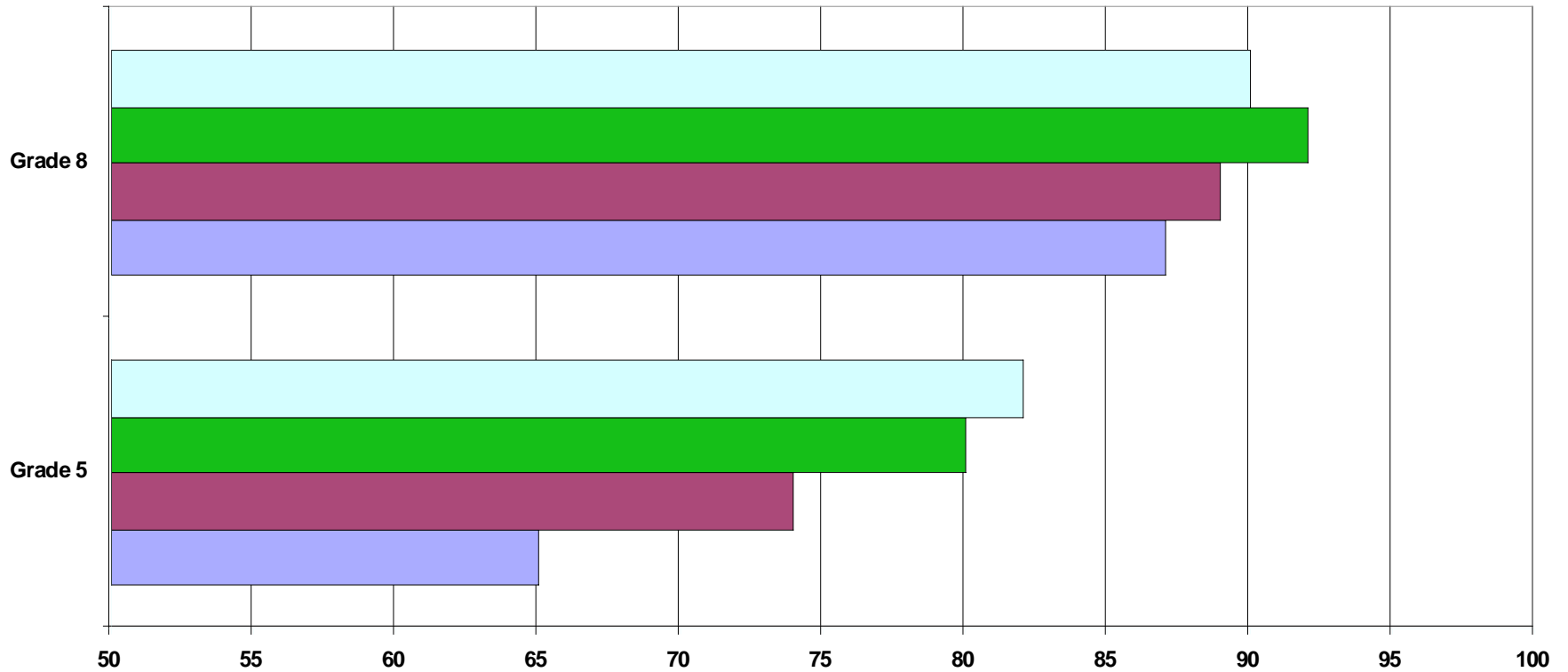
Grade 11	Scaled Score	HS	State	Diff	Significant
	Reading	1480	1350	130	Yes
	Math	1420	1330	90	Yes
	Writing	1570	1440	130	Yes

Assessment Trends

This section provides comparisons of how our students have performed at each grade level dating back since 1996 and follows the progress of graduating classes dating back to when they were in fifth grade.

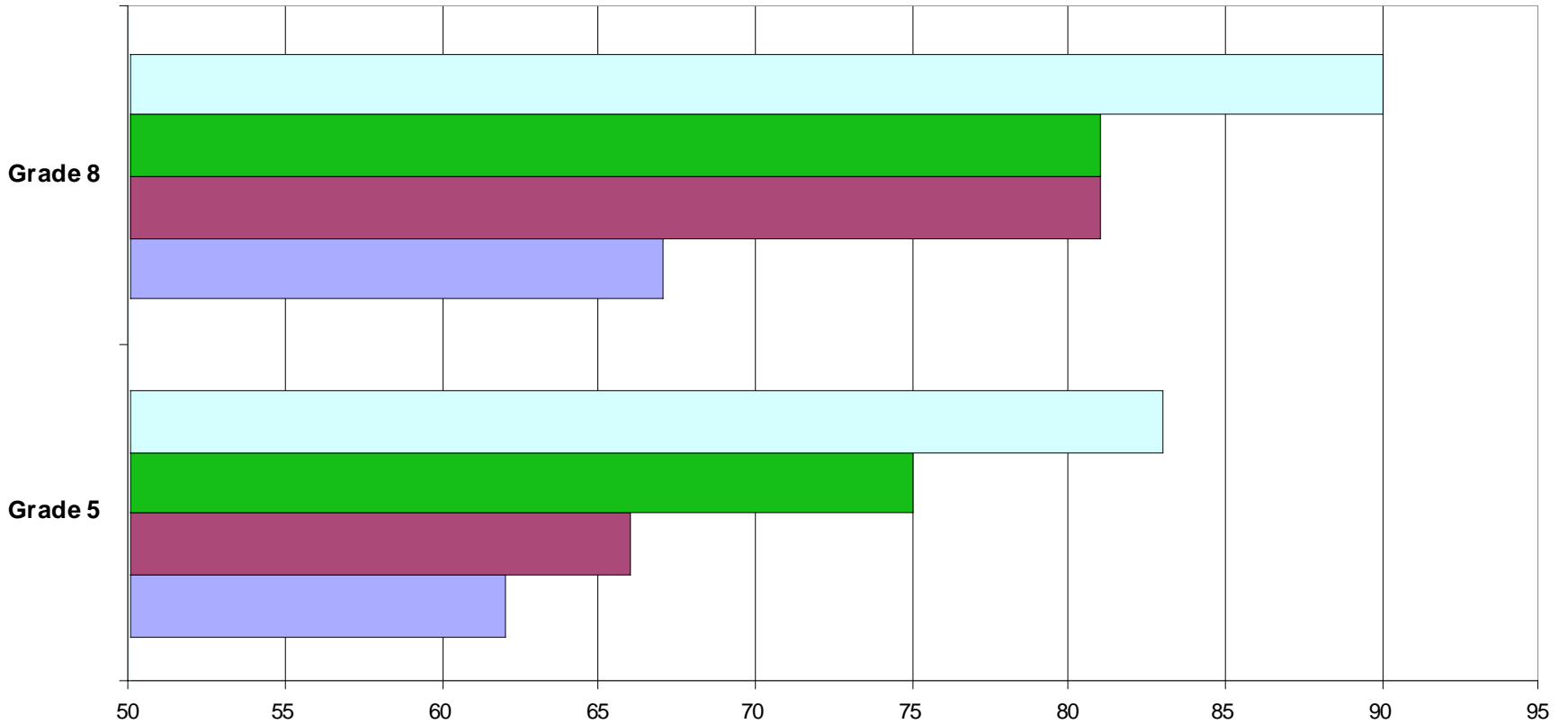
Please be advised that such measures are designated as trends as student populations change within each class over time, which may affect the outcome of performance scores. This data is to be used as a rough estimate of student progress over time.

Reading Performance History - Grades 5 to 8 Percent Advanced and Proficient



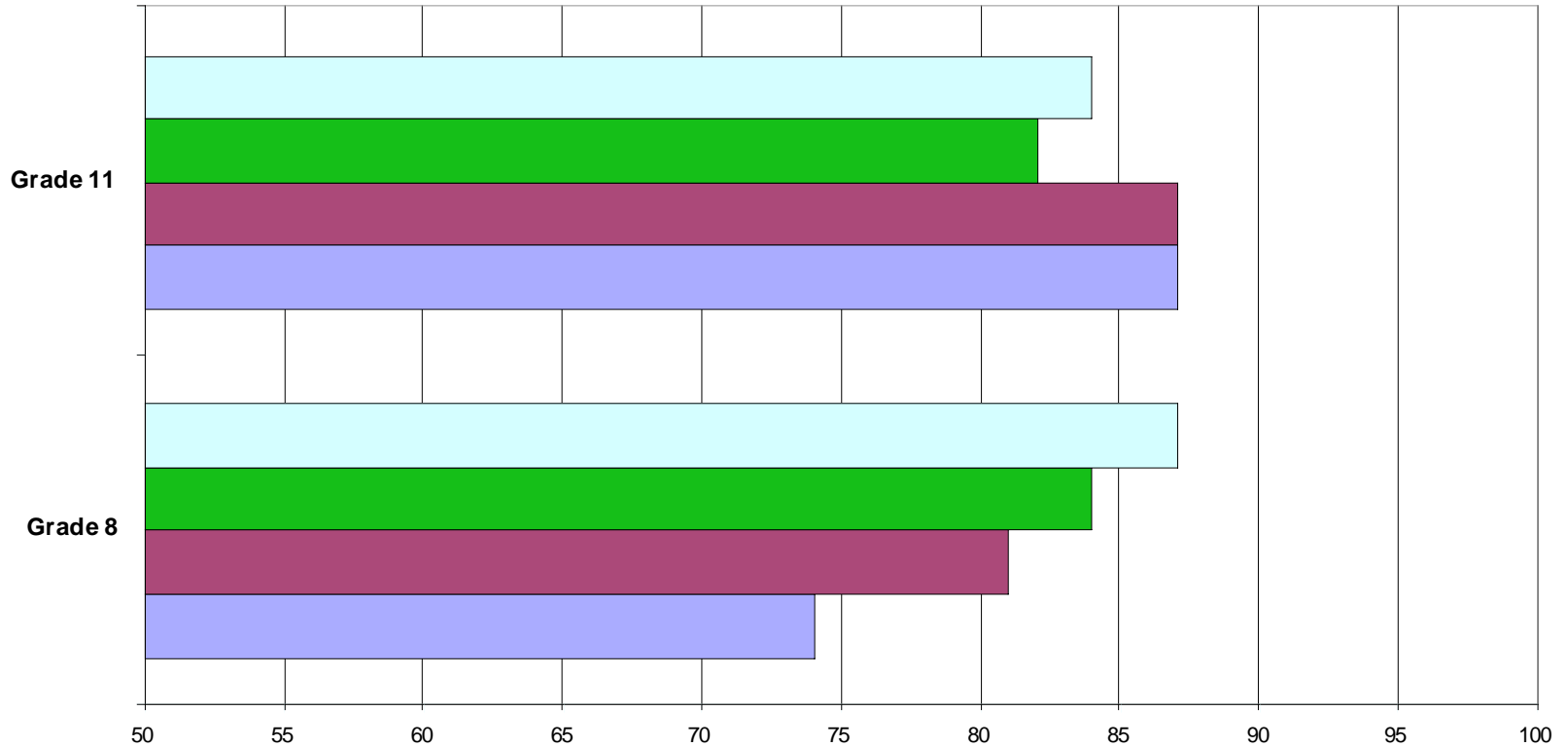
	Grade 5	Grade 8
□ Class of 2011	82	90
■ Class of 2010	80	92
■ Class of 2009	74	89
■ Class of 2008	65	87

Math Performance History - Grades 5 to 8 Percent Advanced & Proficient



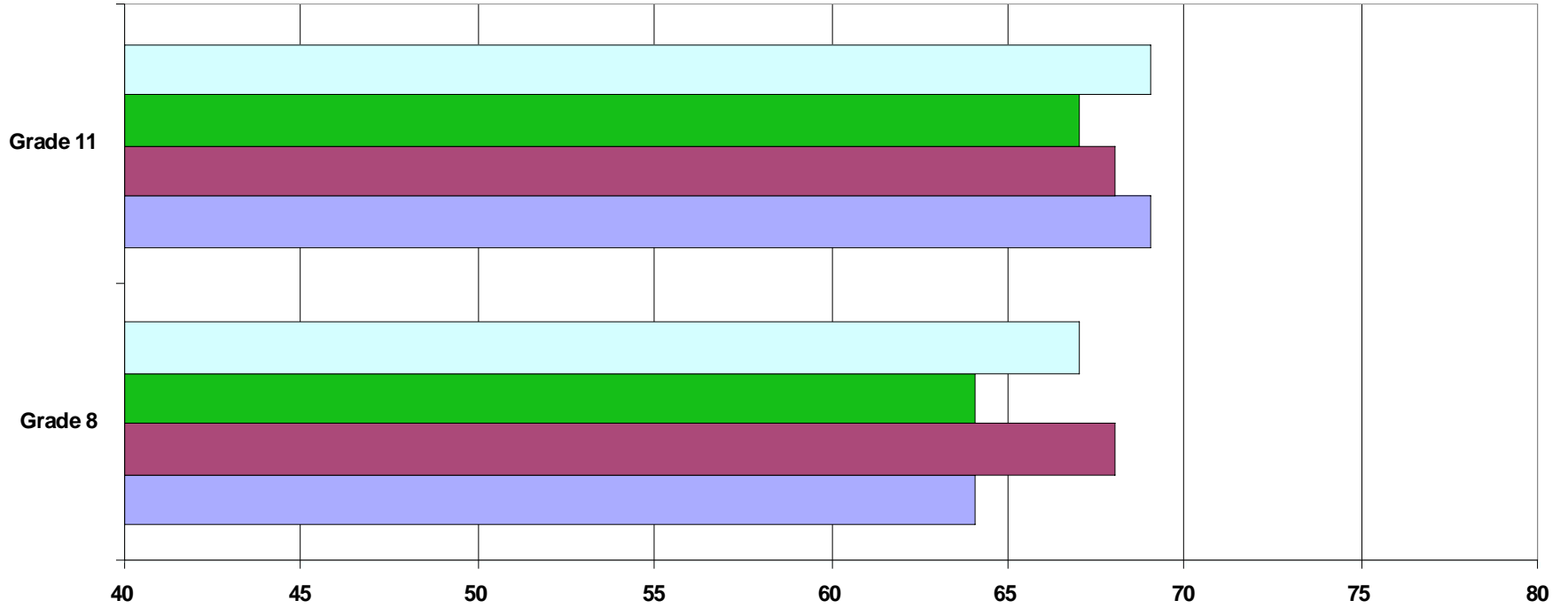
	Grade 5	Grade 8
□ Class of 2011	83	90
■ Class of 2010	75	81
■ Class of 2009	66	81
■ Class of 2008	62	67

Reading Performance History - Grades 8 to 11 Percent Advanced & Proficient



	Grade 8	Grade 11
□ Class of 2008	87	84
■ Class of 2007	84	82
■ Class of 2006	81	87
■ Class of 2005	74	87

Math Performance History - Grades 8 to 11 Percent Advanced & Proficient

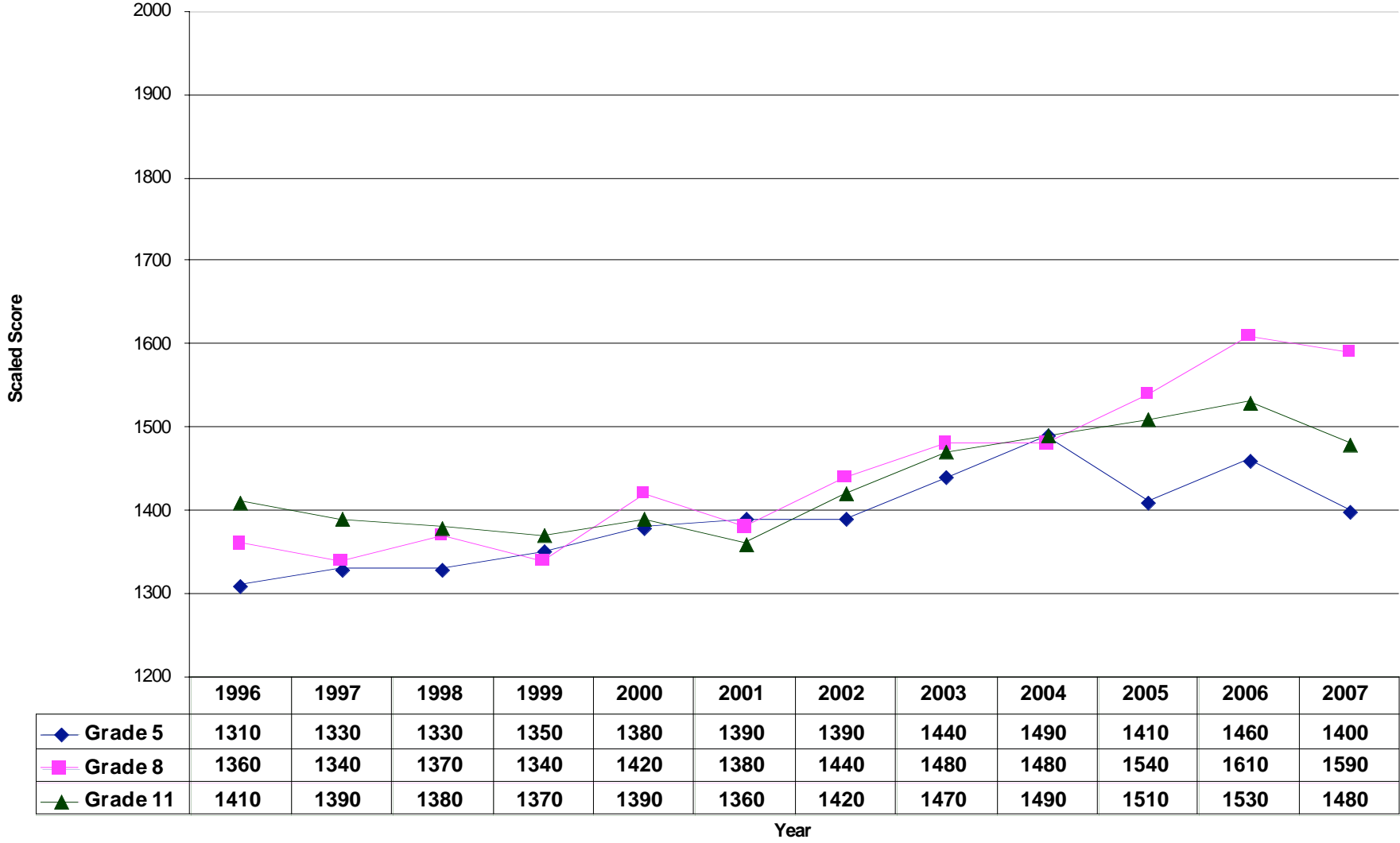


	Grade 8	Grade 11
□ Class of 2008	67	69
■ Class of 2007	64	67
■ Class of 2006	68	68
■ Class of 2005	64	69

PSSA Reading Scaled Scores 12 Year History

Year	Grade 5	Grade 8	Grade 11
1996	1310	1360	1410
1997	1330	1340	1390
1998	1330	1370	1380
1999	1350	1340	1370
2000	1380	1420	1390
2001	1390	1380	1360
2002	1390	1440	1420
2003	1440	1480	1470
2004	1490	1480	1490
2005	1410	1540	1510
2006	1460	1610	1530
2007	1400	1590	1480

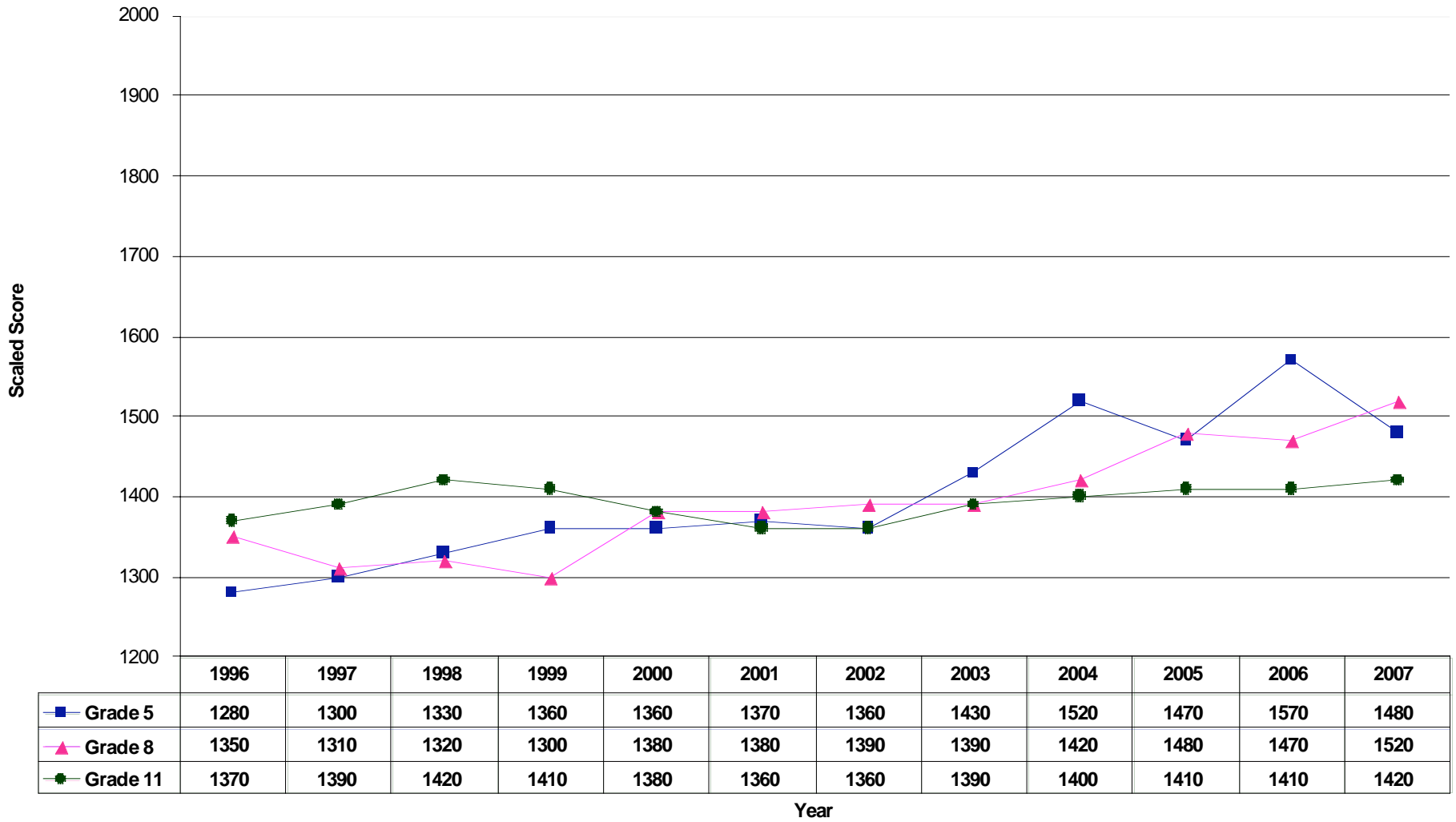
Twelve Year Reading Scaled Score Trend Lines



PSSA Math Scaled Scores 12 Year History

Year	Grade 5	Grade 8	Grade 11
1996	1280	1350	1370
1997	1300	1310	1390
1998	1330	1320	1420
1999	1360	1300	1410
2000	1360	1380	1380
2001	1370	1380	1360
2002	1360	1390	1360
2003	1430	1390	1390
2004	1520	1420	1400
2005	1470	1480	1410
2006	1570	1470	1410
2007	1480	1520	1420

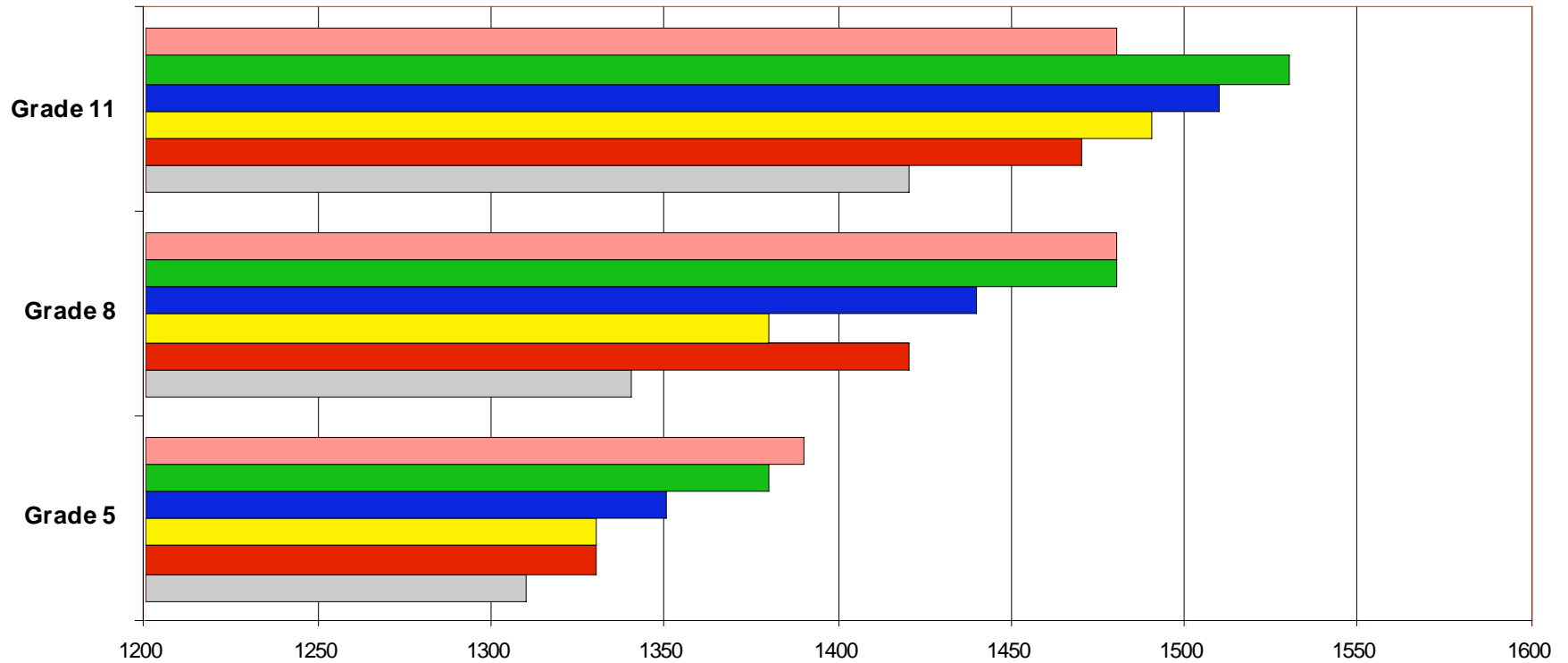
Twelve Year Math Trend Line Scaled Scores



PSSA Scaled Score History by Graduating Class - Reading

Reading	Grade 5	Grade 8	Grade 11
Class of 2003	1310	1340	1420
Class of 2004	1330	1420	1470
Class of 2005	1330	1380	1490
Class of 2006	1350	1440	1510
Class of 2007	1380	1480	1530
Class of 2008	1390	1480	1480

Reading Scaled Score History by Class

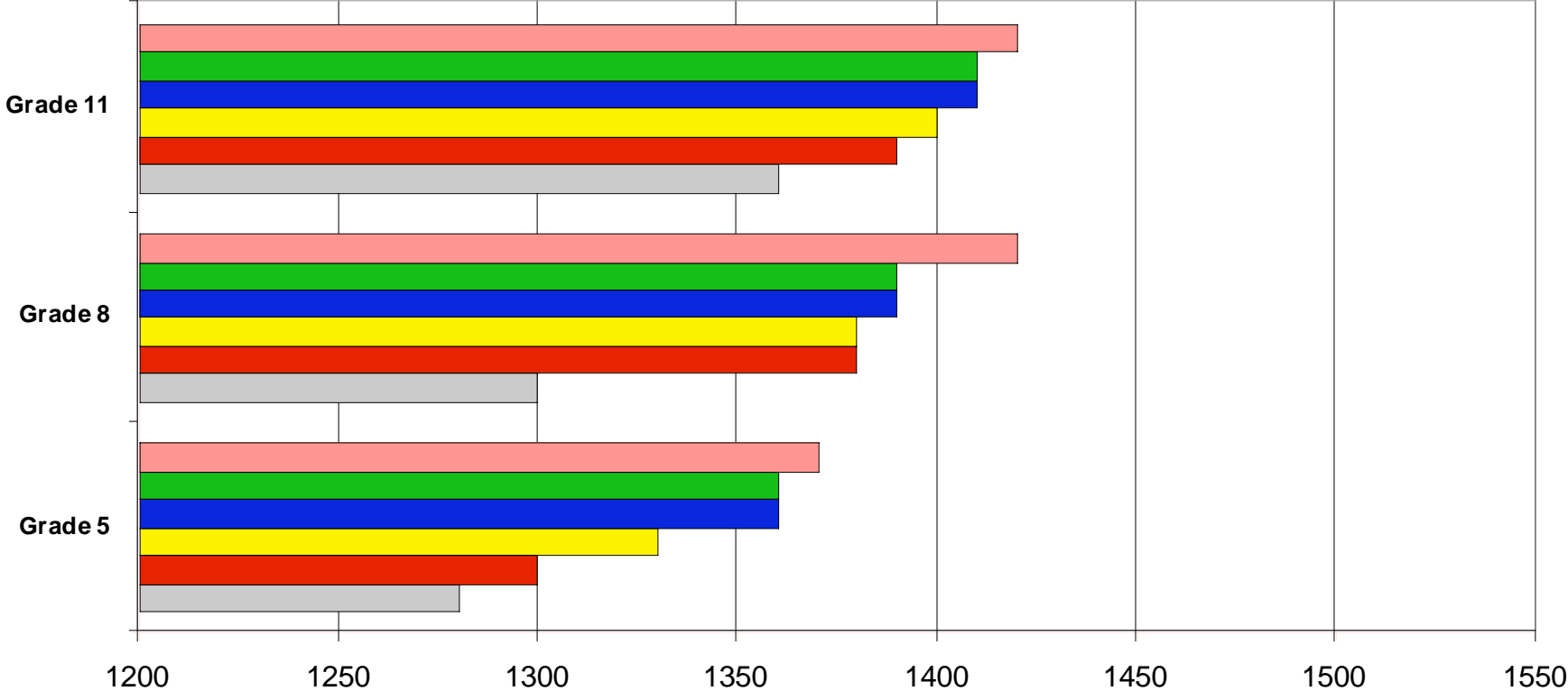


	Grade 5	Grade 8	Grade 11
Class of 2008	1390	1480	1480
Class of 2007	1380	1480	1530
Class of 2006	1350	1440	1510
Class of 2005	1330	1380	1490
Class of 2004	1330	1420	1470
Class of 2003	1310	1340	1420

PSSA Scaled Score History by Graduating Class - Math

Math	Grade 5	Grade 8	Grade 11
Class of 2003	1280	1300	1360
Class of 2004	1300	1380	1390
Class of 2005	1330	1380	1400
Class of 2006	1360	1390	1410
Class of 2007	1360	1390	1410
Class of 2008	1370	1420	1420

Math Scaled Score History by Class



	Grade 5	Grade 8	Grade 11
Class of 2008	1370	1420	1420
Class of 2007	1360	1390	1410
Class of 2006	1360	1390	1410
Class of 2005	1330	1380	1400
Class of 2004	1300	1380	1390
Class of 2003	1280	1300	1360

DISAGGREGATED GROUP PERFORMANCE

		READING								MATH	
		Total IEP	IEP	Total ED	ED			Total IEP	IEP	Total ED	ED
Grade	Students	Adv & Prof	Students	Adv & Prof	Students	Adv & Prof	Students	Adv & Prof	Students	Adv & Prof	
3	15	47%	31	68%	15	73%	31	77%			
4	13	31%	23	57%	14	64%	23	91%			
5	10	20%	35	57%	10	50%	35	71%			
6	17	35%	16	44%	17	35%	16	75%			
7	14	21%	25	68%	14	14%	25	56%			
8	18	33%	23	65%	18	50%	23	65%			
11	13	23%	22	50%	13	15%	22	27%			

IEP = Special Education Students

ED = Economically Disadvantaged Students

2007 PSSA Conclusions

Commendations

- This is the second year in a row that Lewisburg ranks in the top 10% of school districts in the state for overall student performance on the PSSA.
- The secondary reading scores continue to be among the best in the region and the state.
- Math scores across the district remain consistently strong in comparison to the region and the state.

Concerns

- The disaggregated group scores of IEP Students and Economically Disadvantaged Students continue to be lower than expected and must improve.
- There was no significant improvement in our overall performance scores this year in comparison to 2006. Consistent incremental improvement is critical for the success of all our students.

SAT Results and History

SAT Verbal Results (Critical Reading)

	LAHS	State	National
Year	Verbal	Verbal	Verbal
95-96	533	498	505
96-97	544	498	505
97-98	524	497	505
98-99	556	498	505
99-00	539	498	505
00-01	526	500	506
01-02	512	498	504
02-03	533	500	507
03-04	546	501	508
04-05	550	501	508
05-06	530	493	503
06-07	536	493	502

SAT Math Results

	LAHS	State	National
Year	Math	Math	Math
95-96	518	492	508
96-97	538	495	511
97-98	511	495	512
98-99	556	495	511
99-00	542	497	514
00-01	525	499	514
01-02	516	500	516
02-03	519	502	519
03-04	517	502	518
04-05	551	503	520
05-06	535	500	518
06-07	527	499	515

SAT Writing Results (2nd Year)

	LAHS	State	National
	Writing	Writing	Writing
05-06	511	483	497
06-07	520	482	494

Combined Verbal and Math SAT Scores and Percentage Tested

	LAHS	State	National	#	# In	%
Year	Total	Total	Total	Tested	Class	Tested
95-96	1051	990	1013	118	134	88%
96-97	1082	993	1016	89	109	82%
97-98	1035	992	1017	106	138	77%
98-99	1112	993	1016	87	106	82%
99-00	1081	995	1019	118	142	83%
00-01	1051	999	1020	105	135	78%
01-02	1028	998	1020	122	154	79%
02-03	1052	1002	1026	101	126	80%
03-04	1063	1003	1026	106	135	79%
04-05	1101	1004	1028	126	150	84%
05-06	1065	993	1018	112	143	78%
06-07	1063	992	1017	130	150	87%

Overall Conclusions

District Strengths

- High national achievement test scores at the secondary level
- Excellent PSSA reading scores at the secondary level
- Solid PSSA math scores at the elementary and middle levels
- High SAT scores in comparison to state and national average
- High levels of achievement across the district on all measures
- The staff continues to prepare the students very well each year

Areas Needing Improvement for Achievement Growth

- Percentage of students scoring at the advanced and proficient levels must dramatically improve for our special education and economically disadvantaged populations.
- Performance levels across the district must improve to assure the success of our students and meet the state and national requirements of student achievement.