

Lewisburg Area School District



Data Analysis Report 2009-2010 Academic Year

Spring 2010 Terra Nova Results
Spring 2010 PSSA Results
2009-2010 SAT Results
2009-2010 ACT Results

October 14, 2010

This report provides a review of the assessment data and information regarding the Lewisburg Area School District for the 2009-2010 School Year.

Contents

Terra Nova National Achievement Test Results.....	2
State AYP Results.....	5
PSSA Performance Results.....	12
PSSA History.....	35
SAT Results and History.....	41
ACT Results and History.....	46
Conclusions	50

For more information about this report please contact:

Mark D. DiRocco, Ph.D.
Superintendent
1951 Washington AVG., Dept. C.O.
Lewisburg PA 17837
(570) 522-3204

Cathy Moser, M. Ed.
Supervisor of Curriculum and Instruction
1951 Washington Avenue, Dept. C.O.
Lewisburg PA 17837
(570) 522-3255

Terra Nova Achievement Test

Compares our students' performance with a national sample administered to all students in grades K, 1, 2, 9 and 10.

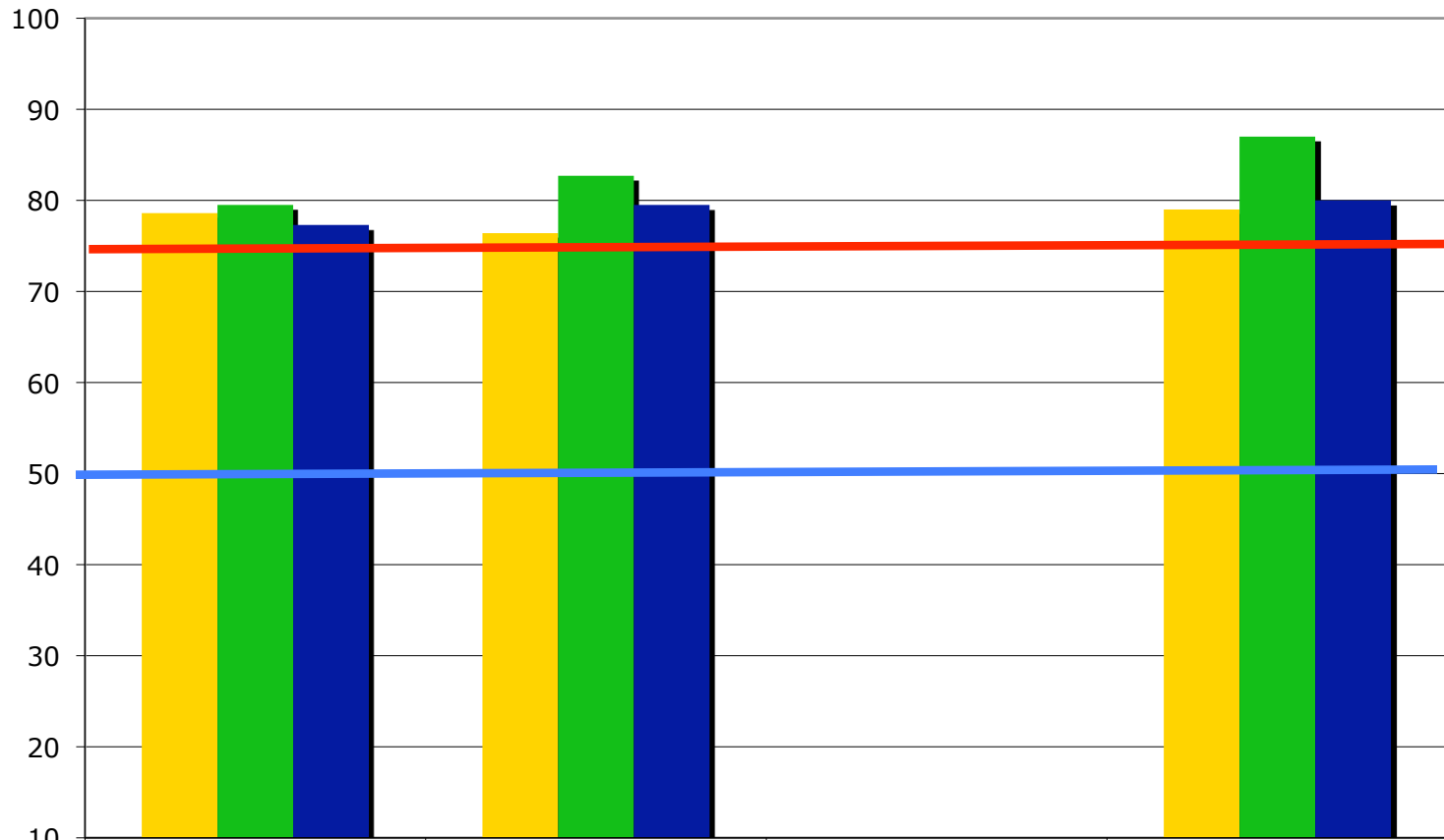
Terminology

Percentile: Shows how our students scored on the test in comparison to a national sample.

Example: A student scoring a 50 did as well or better than 50% of the students in the norm group who took the same test.

Progress: Students progressing at the normal rate should score at the 50th percentile. Students progressing significantly above average will score at the 75th percentile or higher.

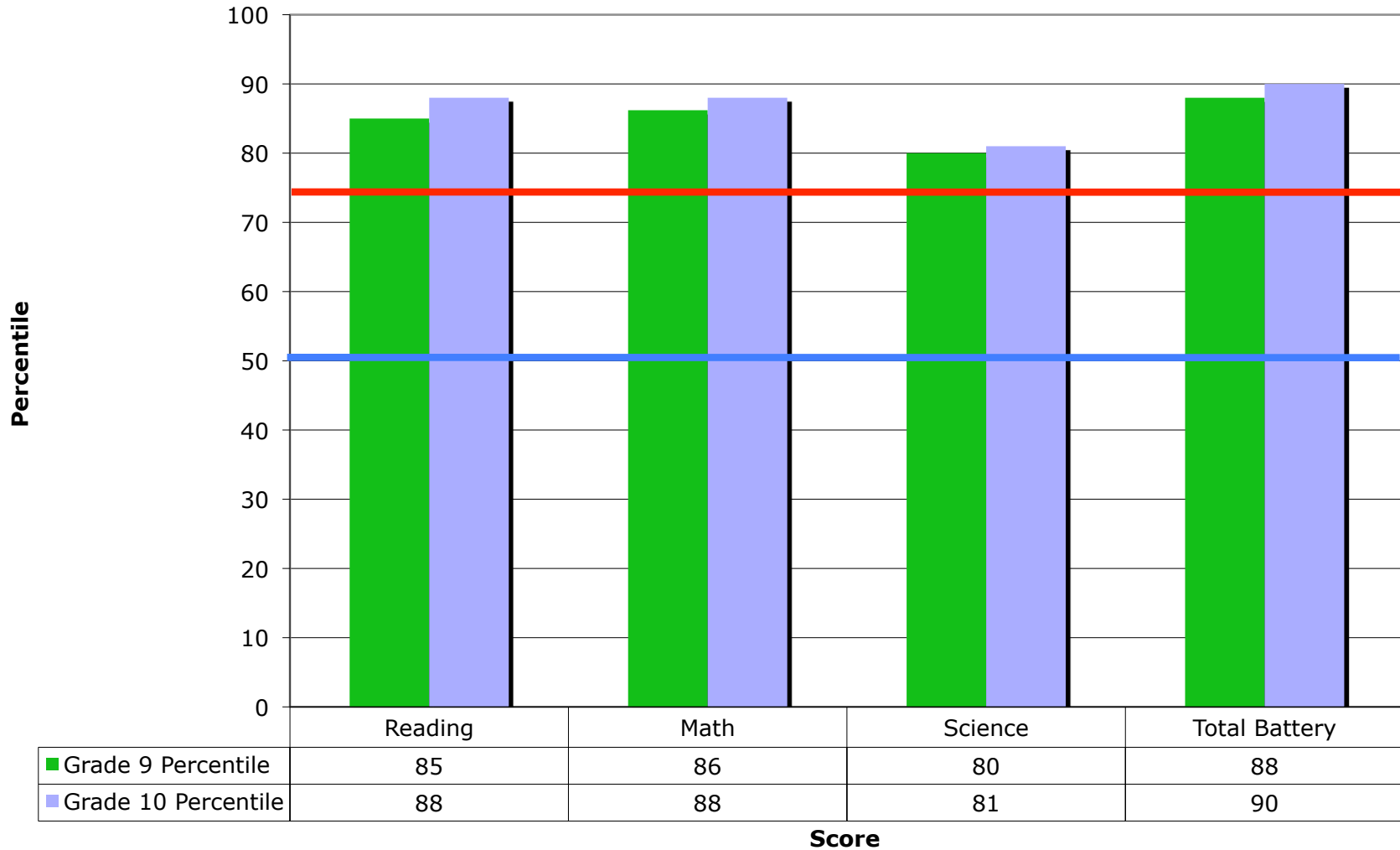
2010 K-2 Terra Nova National Percentile Performance



	Reading	Math	Science	Total Battery
Kindergarten Percentile	79	76		79
Grade 1 Percentile	80	83		87
Grade 2 Percentile	77	80		80

Note: The blue line at the 50th percentile indicates the score that students should attain if they are progressing normally. The red line at the 75th percentile indicates that scores above this mark are considered significantly above national average.

2010 Grade 9-10 Terra Nova Percentile Performance



Note: The blue line at the 50th percentile indicates the score that students should attain if they are progressing normally. The red line at the 75th percentile indicates that scores above this mark are considered significantly above national average.

Pennsylvania System of State Assessment

PSSA

In 2010 the state required students in grades 3, 4, 5, 6, 7, 8 and 11 to take the PSSA math and reading exams. Grades 5, 8, and 11 were administered the state writing exam, and grades 4, 8, and 11 were administered the state science exam.

The PSSA data is the only information used to assess the Adequate Yearly Progress of our students and evaluate our schools for the No Child Left Behind Law.

NCLB Goals

Percentage of Students that Must Be Proficient on the PSSA by Year

Grad. Year	Reading	Math
2014	100%	100%
2013	91%	89%
2012	81%	78%
2011	72%	67%
2010	63%	56%

AYP Status from PDE Web Site

District/ School	2003	2004	2005	2006	2007	2008	2009	2010
LASD	Made AYP	Made AYP	Made AYP	Made AYP	Made AYP	Made AYP	Made AYP	Made AYP
Kelly	Made AYP	Made AYP	Made AYP	Made AYP	Made AYP	Made AYP	Made AYP	Made AYP
Lintown	Made AYP	Made AYP	Made AYP	Made AYP	Made AYP	Made AYP	Made AYP	Made AYP
Middle School	Made AYP	Made AYP	Made AYP	Made AYP	Made AYP	Made AYP	Made AYP	Made AYP
High School	Made AYP	Made AYP	Made AYP	Made AYP	Made AYP	Made AYP	Made AYP	Made AYP

Lewisburg has made AYP every year since the inception of the state's evaluation system.

AYP Disaggregated Groups

MATH - PERCENT ADV. & PROFICIENT			
YEAR	2010	2009	2008
Dist. Totals	90	88	86
All Students	977	982	933
IEP Totals	66	50	41
IEP Students	119	120	122
ED Totals	81	77	59
ED Students	202	181	198

AYP Disaggregated Groups

READING - PERCENT ADV. & PROFICIENT			
YEAR	2010	2009	2008
Dist. Totals	86	84	85
All Students	979	981	933
IEP Totals	38	34	39
IEP Students	117	118	122
ED Totals	68	71	60
ED Students	202	198	198

AYP GROWTH DATA

MATH - PERCENT ADV. & PROFICIENT		
YEAR	2010	2010 GROWTH
Dist. Totals	90	94
All Students	977	977
IEP Totals	66	77
IEP Students	119	119
ED Totals	81	87
ED Students	202	202

AYP GROWTH DATA

READING - PERCENT ADV. & PROFICIENT		
YEAR	2010	2010 GROWTH
Dist. Totals	86	95
All Students	979	979
IEP Totals	38	77
IEP Students	117	117
ED Totals	68	86
ED Students	202	202

PSSA PERFORMANCE RESULTS



SOURCE: PDE WEBSITE
Does not include PASA Modified Math Results

District PSSA Totals

District	Math		Reading		
	Students	Percentage		Students	Percentage
Advanced	648	69%	Advanced	545	56%
Proficient	209	22%	Proficient	287	30%
Adv. & Prof.	857	91%	Adv. & Prof.	832	86%
Basic	63	7%	Basic	84	9%
Below Basic	23	2%	Below Basic	54	6%
Total	943	100%	Total	970	100%

District PSSA Totals

Science			Writing		
	Students	Percentage		Students	Percentage
Advanced	201	49%	Advanced	71	17%
Proficient	141	34%	Proficient	294	72%
Adv. & Prof.	342	83%	Adv. & Prof.	365	89%
Basic	49	12%	Basic	44	11%
Below Basic	21	5%	Below Basic	2	0%
Total	412	100%	Total	411	100%

2010 Third Grade PSSA Results

3rd Grade	Math		Reading	
	Students	Percentage	Students	Percentage
Advanced	70	51%	58	42%
Proficient	56	41%	57	42%
Adv. & Prof.	126	92%	115	84%
Basic	10	7%	15	11%
Below Basic	1	1%	7	5%
Total	137	100%	137	100%

2010 Fourth Grade PSSA Results

4th Grade	Math		Reading		Science	
	Students	Percentage	Students	Percentage	Students	Percentage
Advanced	94	66%	84	57%	100	68%
Proficient	41	29%	40	27%	41	28%
Adv. & Prof.	135	94%	124	84%	141	95%
Basic	5	3%	13	9%	3	2%
Below Basic	3	2%	11	7%	4	3%
Total	143	100%	148	100%	148	100%

2010 Fifth Grade PSSA Results

5th Grade	Math		Reading		Writing	
	Students	Percentage	Students	Percentage	Students	Percentage
Advanced	98	69%	56	38%	10	7%
Proficient	25	17%	59	40%	109	74%
Adv. & Prof.	123	86%	115	78%	119	80%
Basic	14	10%	19	13%	28	19%
Below Basic	6	4%	14	9%	1	1%
Total	143	100%	148	100%	148	100%

2010 Sixth Grade PSSA Results

6th Grade	Math			Reading		
	Students	Percentage			Students	Percentage
Advanced	106	88%		Advanced	74	60%
Proficient	8	7%		Proficient	30	24%
Adv. & Prof.	114	94%		Adv. & Prof.	104	84%
Basic	6	5%		Basic	14	11%
Below Basic	1	1%		Below Basic	6	5%
Total	121	100%		Total	124	100%

2010 Seventh Grade PSSA Results

7th Grade	Math		Reading	
	Students	Percentage	Students	Percentage
Advanced	125	84%	113	75%
Proficient	17	11%	21	14%
Adv. & Prof.	142	96%	134	89%
Basic	4	3%	13	9%
Below Basic	2	1%	3	2%
Total	148	100%	150	100%

2010 Eighth Grade PSSA Results

8th Grade	Math		Reading	
	Students	Percentage	Students	Percentage
Advanced	90	80%	87	74%
Proficient	21	19%	24	21%
Adv. & Prof.	111	98%	111	95%
Basic	2	2%	3	3%
Below Basic	0	0%	3	3%
Total	113	100%	117	100%

2010 Eighth Grade PSSA Results

Science			Writing		
	Students	Percentage		Students	Percentage
Advanced	48	42%	Advanced	39	34%
Proficient	47	41%	Proficient	71	61%
Adv. & Prof.	95	83%	Adv. & Prof.	110	95%
Basic	8	7%	Basic	5	4%
Below Basic	12	10%	Below Basic	1	1%
Total	115	100%	Total	116	100%

2010 Eleventh Grade PSSA Results

11th Grade	Math		Reading	
	Students	Percentage	Students	Percentage
Advanced	65	47%	73	50%
Proficient	41	30%	56	38%
Adv. & Prof.	106	77%	129	88%
Basic	22	16%	7	5%
Below Basic	10	7%	10	7%
Total	138	100%	146	100%

2010 Eleventh Grade PSSA Results

Science				Writing	
	Students	Percentage		Students	Percentage
Advanced	53	37%		22	15%
Proficient	51	35%		113	78%
Adv. & Prof.	104	72%		135	93%
Basic	34	23%		10	7%
Below Basic	7	5%		0	0%
Total	145	100%		145	100%

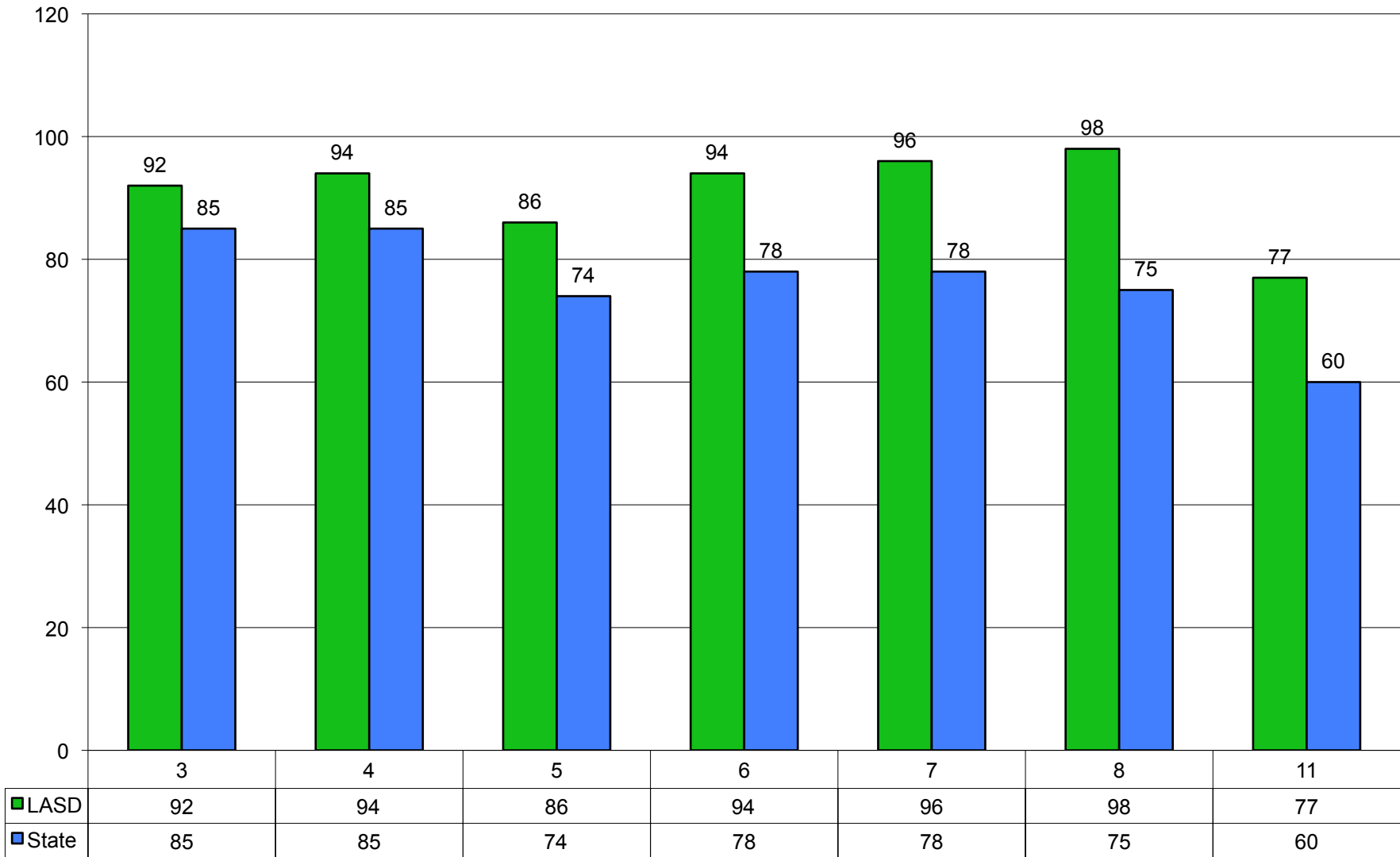
2010 PSSA Mathematics

Percent Advanced & Proficient

Lewisburg vs. State Average

	LASD	State	
Grade	Math	Math	Difference
3	92	85	7
4	94	85	9
5	86	74	12
6	94	78	16
7	96	78	18
8	98	75	23
11	77	60	17
Avg. All Grades	91	76	15

**2010 PSSA Math Scores - Percentage Advanced & Proficient
Lewisburg Scores Compared to State Average**



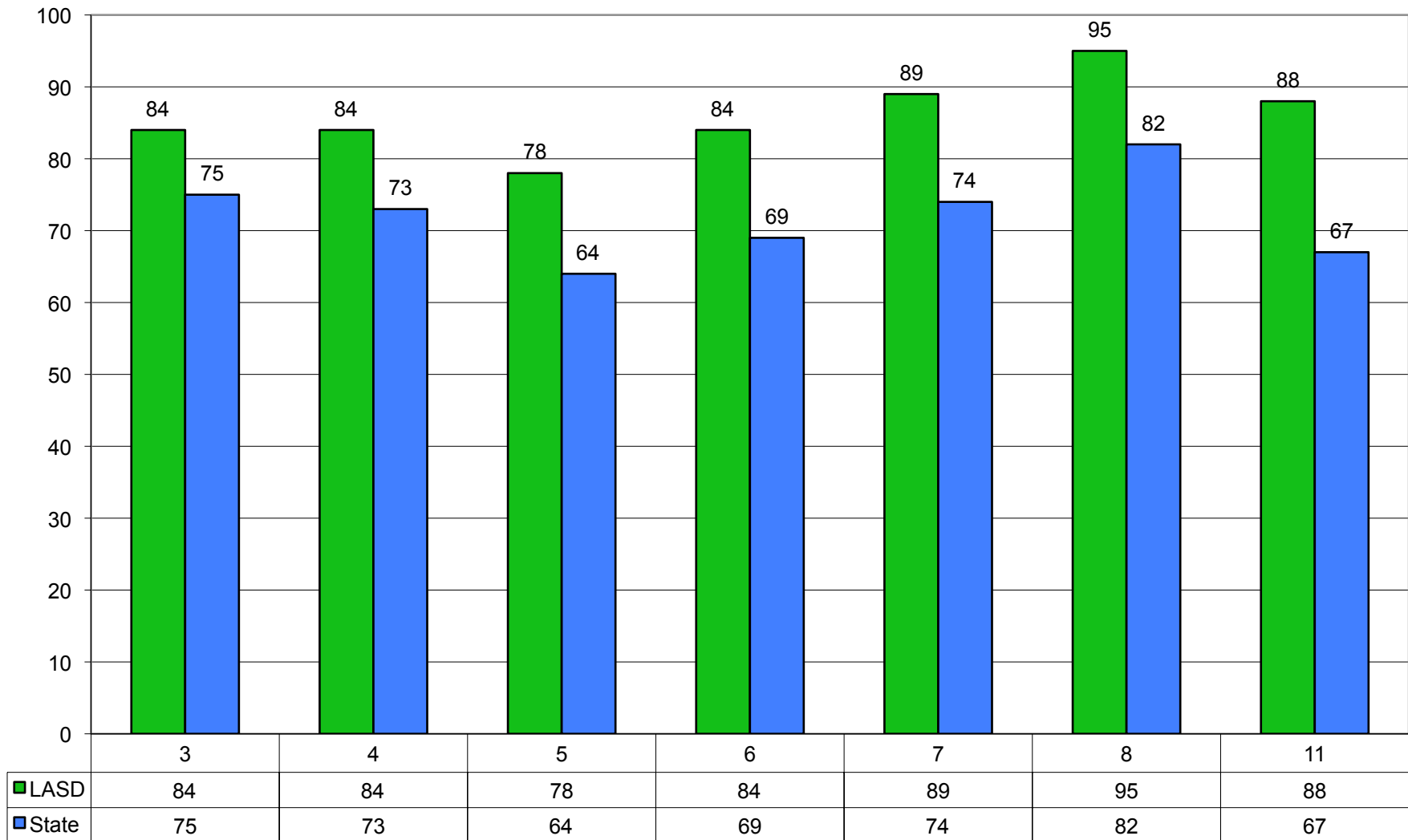
2010 PSSA Reading

Percent Advanced & Proficient

Lewisburg vs. State Average

	LASD	State	
Grade	Reading	Reading	Difference
3	84	75	9
4	84	73	11
5	78	64	14
6	84	69	15
7	89	74	15
8	95	82	13
11	88	67	21
Avg. All Grades	86	72	14

**2010 PSSA Reading Scores - Percentage Advanced & Proficient
Lewisburg Scores Compared to State Average**



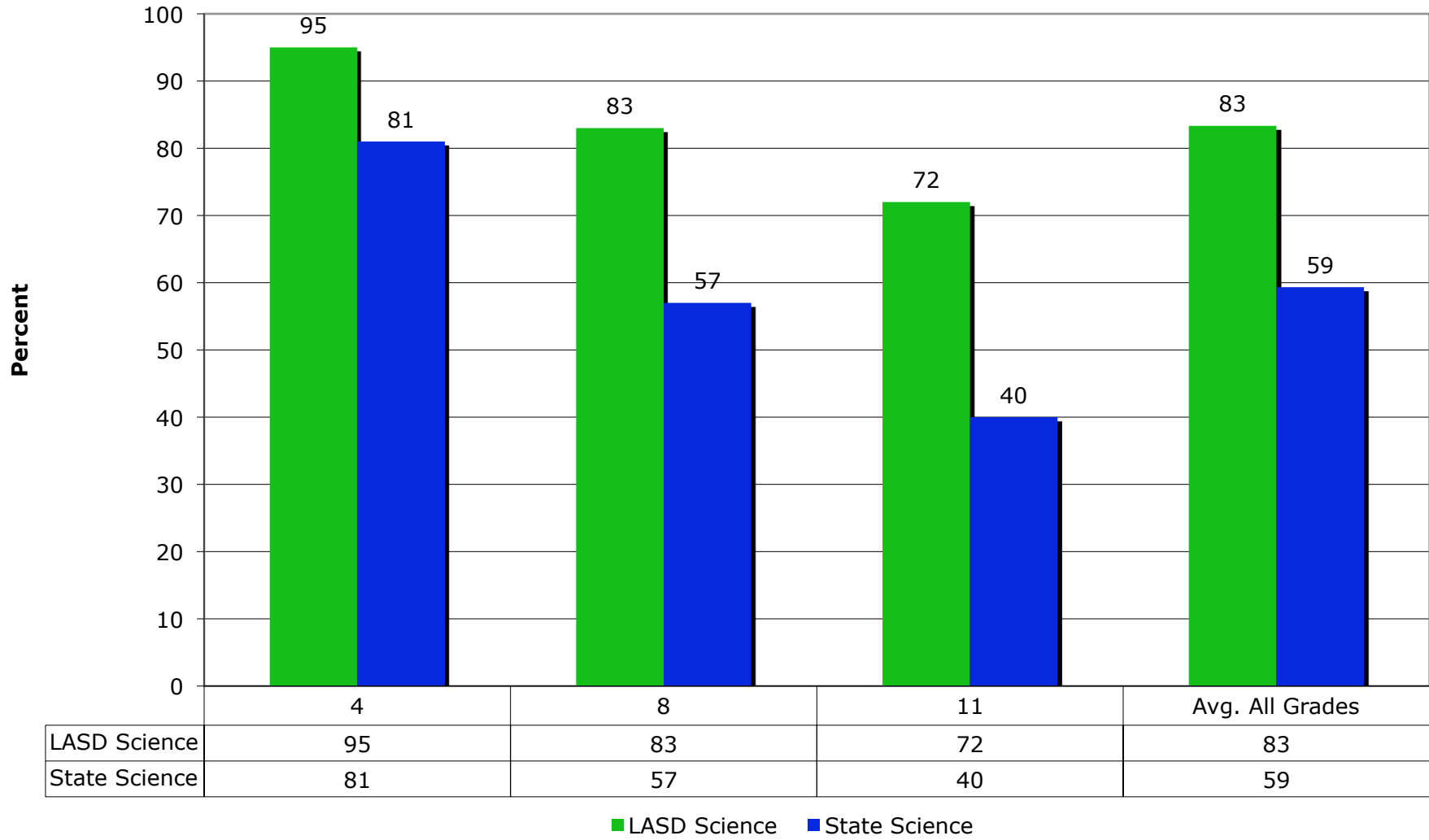
2010 PSSA Science

Percent Advanced & Proficient

Lewisburg vs. State Average

Grade	LASD	State	
	Science	Science	Difference
4	95	81	14
8	83	57	26
11	72	40	32
Avg. All Grades	83	59	24

2010 PSSA Science Scores - Percent Advanced and Proficient vs. State Average



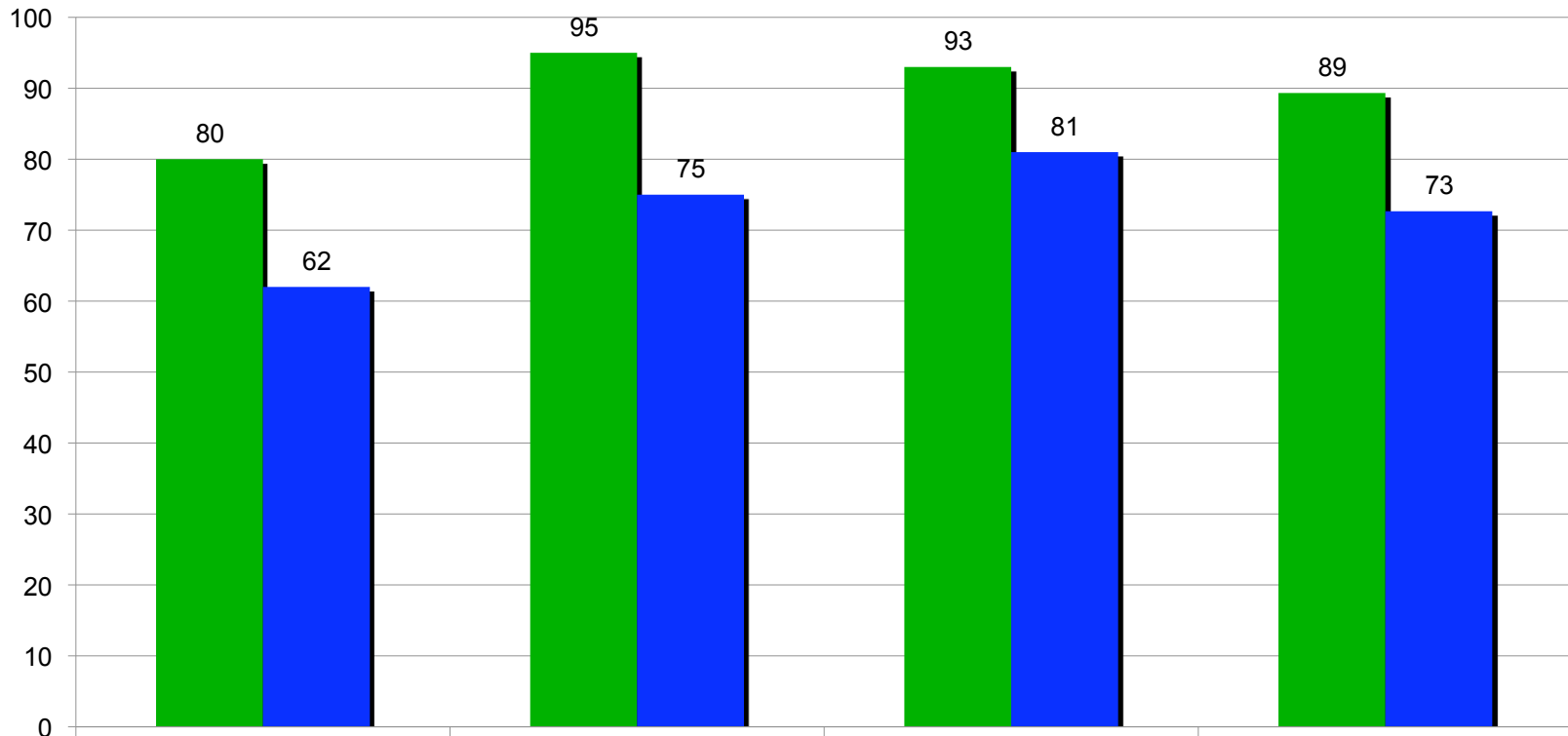
2010 PSSA Writing

Percent Advanced & Proficient

Lewisburg vs. State Average

Grade	LASD	State	
	Writing	Writing	Difference
5	80	62	18
8	95	75	20
11	93	81	12
Avg. All Grades	89	73	17

2010 Writing PSSA Percent Advanced & Proficient vs. State Average



	5	8	11	Avg. All Grades
LASD Writing	80	95	93	89
State Writing	62	75	81	73

■ LASD Writing ■ State Writing

2010 PSSA State Rankings – Math & Reading

	MATH				READING		
GRADE	ADV & PRO	RANK			ADV & PRO	RANK	
3	92.0	160	Top 32%		83.9	151	Top 30%
4	94.4	100	Top 20%		83.8	114	Top 22%
5	86.0	130	Top 26%		78.3	83	Top 17%
6	94.2	62	Top 13%		83.9	62	Top 13%
7	96.0	9	Top 2%		89.3	32	Top 7%
8	98.2	1	#1		94.9	21	Top 4%
11	76.8	52	Top 11%		88.4	14	Top 3%
DISTRICT	90.9	16	Top 4%		85.9	42	Top 9%

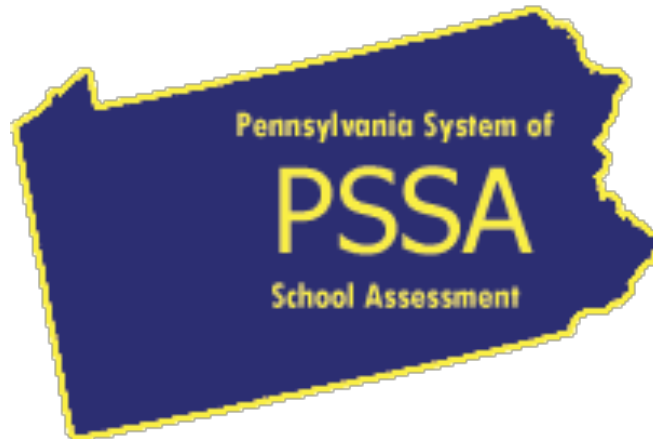
2010 PSSA State Rankings – Science & Writing

	SCIENCE				WRITING		
GRADE	ADV & PRO	RANK			ADV & PRO	2010 RANK	
3							
4	94.6	82	Top 17%				
5					81.1	67	Top 14%
6							
7							
8	81.9	20	Top 4%		94.0	17	Top 4%
11	71.8	6	Top 2%		93.1	56	Top 12%
DISTRICT	82.9	5	Top 1%		89.0	31	Top 7%

2010 PSSA State Rankings

SUBJECT	ADV & PRO	STATE RANK	
SCIENCE	82.9	5	TOP 1%
MATH	90.9	16	TOP 4%
WRITING	89.0	31	TOP 7%
READING	85.9	42	TOP 9%
TOTAL ALL SUBJECTS	87.6	16	TOP 4%

PSSA History 2006-2010



PSSA History – Math

Percent Advanced & Proficient

Grade	2006	2007	2008	2009	2010
	Math	Math	Math	Math	Math
3	96	90	86	88	92
4	94	94	86	90	94
5	88	82	88	91	86
6	80	87	91	93	94
7	92	84	85	87	96
8	81	90	90	92	98
11	68	69	76	74	77
Average All Grades	86	85	86	88	91

PSSA History – Reading

Percent Advanced & Proficient

	2006	2007	2008	2009	2010
Grade	Reading	Reading	Reading	Reading	Reading
3	80	80	87	84	84
4	79	83	76	80	84
5	81	73	78	82	78
6	76	82	84	83	84
7	88	87	85	80	89
8	92	90	93	94	95
11	83	84	89	84	88
Average All Grades	83	83	85	84	86

PSSA History – Science

Percent Advanced & Proficient

Grade	2006	2007	2008	2009	2010
	Science	Science	Science	Science	Science
3					
4	NA	NA	88	94	95
5					
6					
7					
8	NA	NA	78	81	82
11	NA	NA	68	74	72
Average All Grades			78	83	83

PSSA History – Writing

Percent Advanced & Proficient

Grade	2006	2007	2008	2009	2010
	Writing	Writing	Writing	Writing	Writing
3					
4					
5	45	73	85	83	81
6					
7					
8	84	88	87	85	94
11	98	92	91	95	93
Average All Grades	76	84	88	88	89

2010 PSSA Conclusions

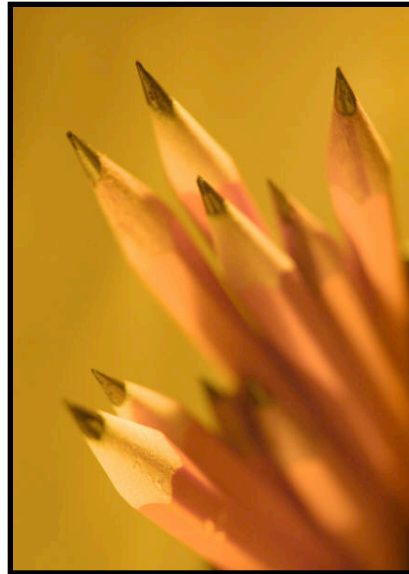
Commendations

- Lewisburg ranks in the top tier of school districts in the state for overall student performance including the top 1% in science, the top 4% in math, the top 7% in writing, and the top 9% in reading.
- Lewisburg ranks 16th of 500 Pennsylvania School Districts in overall academic achievement and continues to be one of the top performing school districts in the the state.
- Considerable progress has been made in improving academic performance in reading and math for economically disadvantaged students and in math for IEP students.

Concerns

- Reading performance needs to improve significantly for IEP students.
- We must focus our efforts to expand the gains made by our disaggregated groups in the core academic areas.

SAT Results and History 1996 to 2010



SAT Verbal Results (Critical Reading)

Year	LAHS Verbal	State Verbal	National Verbal
95-96	533	498	505
96-97	544	498	505
97-98	524	497	505
98-99	556	498	505
99-00	539	498	505
00-01	526	500	506
01-02	512	498	504
02-03	533	500	507
03-04	546	501	508
04-05	550	501	508
05-06	530	493	503
06-07	536	493	503
07-08	539	494	502
08-09	548	493	501
09-10	560	492	501

SAT Math Results

Year	LAHS Math	State Math	National Math
95-96	518	492	508
96-97	538	495	511
97-98	511	495	512
98-99	556	495	511
99-00	542	497	514
00-01	525	499	514
01-02	516	500	516
02-03	519	502	519
03-04	517	502	518
04-05	551	503	520
05-06	535	500	518
06-07	527	499	515
07-08	527	501	515
08-09	543	501	515
09-10	542	501	516

SAT Writing Results

Year	LAHS	State	National
	Writing	Writing	Writing
05-06	511	483	497
06-07	520	482	494
07-08	528	483	494
08-09	537	483	493
09-10	535	480	492

Combined Verbal and Math SAT Scores and Percent Tested

	LAHS	State	National	#	# In	%
Year	Total	Total	Total	Tested	Class	Tested
95-96	1051	990	1013	118	134	88.1%
96-97	1082	993	1016	89	109	81.7%
97-98	1035	992	1017	106	138	76.8%
98-99	1112	993	1016	87	106	82.1%
99-00	1081	995	1019	118	142	83.1%
00-01	1051	999	1020	105	135	77.8%
01-02	1028	998	1020	122	154	79.2%
02-03	1052	1002	1026	101	126	80.2%
03-04	1063	1003	1026	106	135	78.5%
04-05	1101	1004	1028	126	150	84.0%
05-06	1065	993	1018	112	143	78.3%
06-07	1063	992	1017	130	150	86.7%
07-08	1066	995	1017	129	161	80.1%
08-09	1091	994	1016	116	131	88.5%
09-10	1102	993	1017	138	160	86.3%

ACT RESULTS AND HISTORY 2006-2010



ACT RESULTS

	TOTAL TESTED		ENGLISH				MATH			
Grad Year	District	ACT Benchmark	District	State	Nat'l	ACT Benchmark	District	State	Nat'l	
2006	9	18	20.7	21.3	20.6	22.0	21.4	21.7	20.8	
2007	10	18	21.5	21.5	20.7	22.0	22.7	21.9	21.0	
2008	27	18	23.5	21.8	20.6	22.0	23.9	22.3	21.0	
2009	21	18	24.7	21.7	20.6	22.0	24.3	22.2	21.0	
2010	39	18	25.4	21.3	20.5	22.0	23.7	22.1	21.0	

ACT RESULTS

	TOTAL TESTED		READING				SCIENCE			
Grad Year	District	ACT Benchmark	District	State	Nat'l	ACT Benchmark	District	State	Nat'l	
2006	9	21	23.7	22.2	21.4	24.0	20.0	22.2	20.9	
2007	10	21	21.9	22.4	21.5	24.0	21.8	22.4	21.0	
2008	27	21	25.0	22.5	21.4	24.0	23.0	22.5	20.8	
2009	21	21	25.8	22.4	21.4	24.0	24.3	22.4	20.9	
2010	39	21	26.0	22.1	21.3	24.0	24.4	22.1	20.9	

ACT RESULTS

	TOTAL TESTED		COMPOSITE		
Grad Year	District	ACT Benchmark	District	State	National
2006	9	21	21.6	21.8	21.0
2007	10	21	22.0	22.0	21.0
2008	27	21	23.9	22.2	21.0
2009	21	21	24.9	22.1	20.9
2010	39	21	25.0	21.9	21.0

OVERALL CONCLUSIONS

District Strengths

- High national achievement test scores on the Terra Nova.
- Highest ever academic performance levels on the PSSA.
- High SAT scores and participation rates in comparison to state and national average.
- High ACT scores in comparison to state and national average.

Areas Needing Improvement for Achievement Growth

- The percentage of students scoring at the advanced and proficient levels in reading must improve significantly for our special education population.
- We need to continue to focus and refine our efforts to customize learning for each student.