

Terra Nova National Achievement Test Results



Kelly Elementary

Kindergarten	Reading	Reading		Kindergarten	Math	Math
	Students	%			Students	%
Advanced	65	52.4%		Advanced	84	67.7%
Proficient	31	25.0%		Proficient	30	24.2%
Adv. & Prof.	96	77.4%		Adv. & Prof.	114	91.9%
Basic	18	14.5%		Basic	7	5.6%
Below Basic	10	8.1%		Below Basic	3	2.4%
Total	124	100.0%		Total	124	100.0%

First Grade	Reading	Reading		First Grade	Math	Math
	Students	%			Students	%
Advanced	69	52.3%		Advanced	72	54.5%
Proficient	27	20.5%		Proficient	33	25.0%
Adv. & Prof.	96	72.7%		Adv. & Prof.	105	79.5%
Basic	26	19.7%		Basic	20	15.2%
Below Basic	10	7.6%		Below Basic	7	5.3%
Total	132	100.0%		Total	132	100.0%

Second Grade	Reading	Reading		Second Grade	Math	Math
	Students	%			Students	%
Advanced	85	53.5%		Advanced	96	60.4%
Proficient	36	22.6%		Proficient	38	23.9%
Adv. & Prof.	121	76.1%		Adv. & Prof.	134	84.3%
Basic	25	15.7%		Basic	17	10.7%
Below Basic	13	8.2%		Below Basic	8	5.0%
Total	159	100.0%		Total	159	100.0%

PSSA PERFORMANCE RESULTS



Third Grade

3rd Grade	Math			Reading		
	Students	Percentage		Students	Percentage	
Advanced	87	55.4%		Advanced	67	42.7%
Proficient	58	36.9%		Proficient	71	45.2%
Adv. & Prof.	145	92.4%		Adv. & Prof.	138	87.9%
Basic	11	7.0%		Basic	9	5.7%
Below Basic	1	0.6%		Below Basic	10	6.4%
Total	157	100.0%		Total	157	100.0%

Fourth Grade

4th Grade	Math		Reading		Science			
	Students	Percentage		Students	Percentage		Students	Percentage
Advanced	100	69.4%	Advanced	62	42.8%	Advanced	91	63.2%
Proficient	30	20.8%	Proficient	65	44.8%	Proficient	42	29.2%
Adv. & Prof.	130	90.3%	Adv. & Prof.	127	87.6%	Adv. & Prof.	133	92.4%
Basic	6	4.2%	Basic	11	7.6%	Basic	6	4.2%
Below Basic	8	5.6%	Below Basic	7	4.8%	Below Basic	5	3.5%
Total	144	100.0%	Total	145	100.0%	Total	144	100.0%

Fifth Grade

5th Grade	Math		Reading			Writing		
	Students	Percentage		Students	Percentage		Students	Percentage
Advanced	79	60.8%	Advanced	54	41.5%	Advanced	7	5.4%
Proficient	28	21.5%	Proficient	51	39.2%	Proficient	97	74.6%
Adv. & Prof.	107	82.3%	Adv. & Prof.	105	80.8%	Adv. & Prof.	104	80.0%
Basic	14	10.8%	Basic	13	10.0%	Basic	25	19.2%
Below Basic	9	6.9%	Below Basic	12	9.2%	Below Basic	1	0.8%
Total	130	100.0%	Total	130	100.0%	Total	130	100.0%

Grades 3-5

3-5 Band	Math		Reading		
	Students	Percentage		Students	Percentage
Adv & Prof	382	88.6%	Adv & Prof	370	85.6%
B & BB	49	11.4%	B & BB	62	14.4%
Total	431		Total	432	

Sixth Grade

6th Grade	Math			Reading	
	Students	Percentage		Students	Percentage
Advanced	93	67.9%	Advanced	73	53.3%
Proficient	27	19.7%	Proficient	35	25.5%
Adv. & Prof.	120	87.6%	Adv. & Prof.	108	78.8%
Basic	11	8.0%	Basic	17	12.4%
Below Basic	6	4.4%	Below Basic	12	8.8%
Total	137	100.0%	Total	137	100.0%

Seventh Grade

7th Grade	Math		Reading		
	Students	Percentage		Students	Percentage
Advanced	121	78.6%	Advanced	101	65.6%
Proficient	29	18.8%	Proficient	34	22.1%
Adv. & Prof.	150	97.4%	Adv. & Prof.	135	87.7%
Basic	3	1.9%	Basic	13	8.4%
Below Basic	1	0.6%	Below Basic	6	3.9%
Total	154	100.0%	Total	154	100.0%

Eighth Grade

8th Grade	Math		Reading		
	Students	Percentage		Students	Percentage
Advanced	113	73.9%	Advanced	112	73.2%
Proficient	18	11.8%	Proficient	25	16.3%
Adv. & Prof.	131	85.6%	Adv. & Prof.	137	89.5%
Basic	10	6.5%	Basic	10	6.5%
Below Basic	12	7.8%	Below Basic	6	3.9%
Total	153	100.0%	Total	153	100.0%

Eighth Grade

Science			Writing		
	Students	Percentage		Students	Percentage
Advanced	65	42.5%	Advanced	21	13.8%
Proficient	46	30.1%	Proficient	114	75.0%
Adv. & Prof.	111	72.5%	Adv. & Prof.	135	88.8%
Basic	22	14.4%	Basic	16	10.5%
Below Basic	20	13.1%	Below Basic	1	0.7%
Total	153	100.0%	Total	152	100.0%

Grades 6-8

6-8 Band	Math		Reading		
	Students	Percentage	Students	Percentage	
Adv & Prof	401	90.3%	Adv & Prof	380	85.6%
B & BB	43	7.9%	B & BB	64	15.0%
Total	444		Total	444	

District Totals

District	Math		Reading		
	Students	Percentage			
			Students	Percentage	
Advanced	593	67.8%	Advanced	469	53.5%
Proficient	190	21.7%	Proficient	281	32.1%
Adv. & Prof.	783	89.5%	Adv. & Prof.	750	85.6%
Basic	55	6.3%	Basic	73	8.3%
Below Basic	37	4.2%	Below Basic	53	6.1%
Total	875	100.0%	Total	876	100.0%

District Totals

Science			Writing		
	Students	Percentage		Students	Percentage
Advanced	156	52.5%	Advanced	28	9.9%
Proficient	88	29.6%	Proficient	211	74.8%
Adv. & Prof.	244	82.2%	Adv. & Prof.	239	84.8%
Basic	28	9.4%	Basic	41	14.5%
Below Basic	25	8.4%	Below Basic	2	0.7%
Total	297	100.0%	Total	282	100.0%

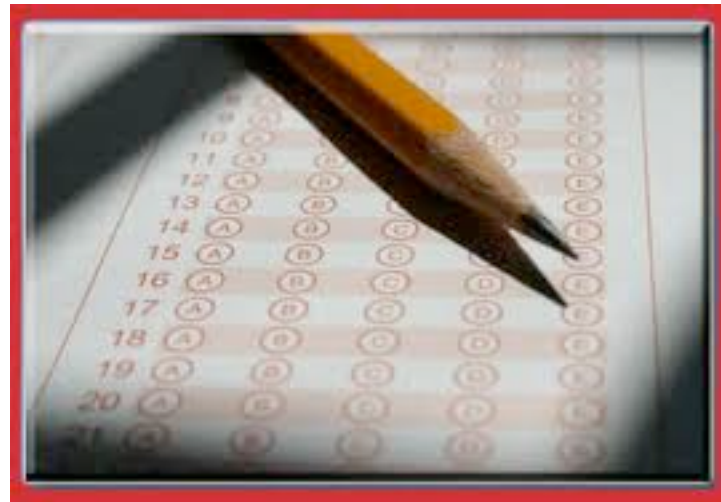
Seven Year History of District Totals

	Math	Reading	Science	Writing
2007	83	85	NA	84
2008	86	85	78	87
2009	88	84	83	88
2010	90	86	83	89
2011	88	87	82	92
2012	88	86	86	85
2013	89	86	82	85

Keystone Exams

HS Algebra			HS Literature		
Grade 11					
	Students	Percentage		Students	Percentage
Adv. & Prof.	120	70.83%	Adv. & Prof.	105	85.00%
Tests	169		Tests	123	
HS Biology					
	Students				
Adv. & Prof.	93	76.67%			
Tests	121				

SAT Results and History 1996 to 2013



SAT Math Results

			SAT Scores
	LAHS	State	National
Year	Math	Math	Math
95-96	518	492	508
96-97	538	495	511
97-98	511	495	512
98-99	556	495	511
99-00	542	497	514
00-01	525	499	514
01-02	516	500	516
02-03	519	502	519
03-04	517	502	518
04-05	551	503	520
05-06	535	500	518
06-07	527	499	515
07-08	527	501	515
08-09	543	501	515
09-10	542	501	516
10-11	536	501	514
11-12	546	501	514
12-13	550	504	514

SAT Verbal Results (Critical Reading)

	LAHS	State	National
Year	Verbal	Verbal	Verbal
95-96	533	498	505
96-97	544	498	505
97-98	524	497	505
98-99	556	498	505
99-00	539	498	505
00-01	526	500	506
01-02	512	498	504
02-03	533	500	507
03-04	546	501	508
04-05	550	501	508
05-06	530	493	503
06-07	536	493	503
07-08	539	494	502
08-09	548	493	501
09-10	560	492	501
10-11	546	493	497
11-12	546	491	496
12-13	554	494	496

Combined Verbal and Math SAT Scores and Percent Tested

	LAHS	State	National	#	# In	%
Year	Total	Total	Total	Tested	Class	Tested
95-96	1051	990	1013	118	134	88.1%
96-97	1082	993	1016	89	109	81.7%
97-98	1035	992	1017	106	138	76.8%
98-99	1112	993	1016	87	106	82.1%
99-00	1081	995	1019	118	142	83.1%
00-01	1051	999	1020	105	135	77.8%
01-02	1028	998	1020	122	154	79.2%
02-03	1052	1002	1026	101	126	80.2%
03-04	1063	1003	1026	106	135	78.5%
04-05	1101	1004	1028	126	150	84.0%
05-06	1065	993	1018	112	143	78.3%
06-07	1063	992	1017	130	150	86.7%
07-08	1066	995	1017	129	161	80.1%
08-09	1091	994	1016	116	131	88.5%
09-10	1102	993	1017	138	160	86.3%
10-11	1082	994	1011	130	143	90.9%
11-12	1092	992	1010	117	143	81.80%
12-13	1104	998	1010	116	131	89.00%

SAT Writing Results

Year	LAHS	State	National
	Writing	Writing	Writing
05-06	511	483	497
06-07	520	482	494
07-08	528	483	494
08-09	537	483	493
09-10	535	480	492
10-11	519	479	489
11-12	528	480	488
12-13	535	482	488

ACT RESULTS AND HISTORY 2006-2013



ACT RESULTS

ACT	TOTAL TESTED		ENGLISH				MATH		
Grad Year	District	ACT Benchmark	District	State	National	ACT Benchmark	District	State	National
2006	9	18.0	20.7	21.3	20.6	22.0	21.4	21.7	20.8
2007	10	18.0	21.5	21.5	20.7	22.0	22.7	21.9	21.0
2008	27	18.0	23.5	21.8	20.6	22.0	23.9	22.3	21.0
2009	21	18.0	24.7	21.7	20.6	22.0	24.3	22.2	21.0
2010	39	18.0	25.4	21.3	20.5	22.0	23.7	22.1	21.0
2011	23	18.0	23.8	21.9	20.6	22.0	24.3	22.6	21.1
2012	24	18.0	26.0	22.0	20.5	22.0	25.8	22.7	21.1
2013	27	18.0	23.9	22.2	20.2	22.0	24.5	23.0	20.9

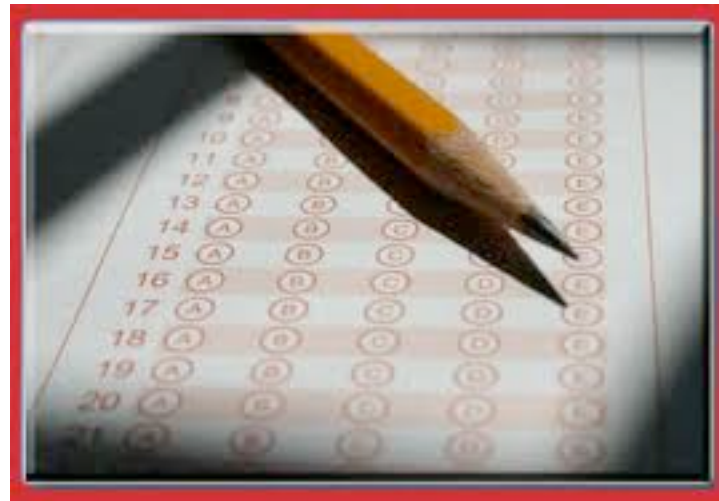
ACT RESULTS

ACT	TOTAL TESTED	READING				SCIENCE			
		ACT Bench mark	District	State	National	ACT Bench mark	District	State	National
Grad Year	District	ACT Bench mark	District	State	National	ACT Bench mark	District	State	National
2006	9	21.0	23.7	22.2	21.4	24.0	20.0	22.2	20.9
2007	10	21.0	21.9	22.4	21.5	24.0	21.8	22.4	21.0
2008	27	21.0	25.0	22.5	21.4	24.0	23.0	22.5	20.8
2009	21	21.0	25.8	22.4	21.4	24.0	24.3	22.4	20.9
2010	39	21.0	26.0	22.1	21.3	24.0	24.4	21.4	20.9
2011	23	21.0	25.7	22.6	21.3	24.0	23.4	21.8	20.9
2012	23	21.0	25.7	22.6	21.3	24.0	23.4	21.8	20.9
2013	27	21.0	25.0	23.0	23.0	24.0	23.7	22.2	20.9

ACT RESULTS

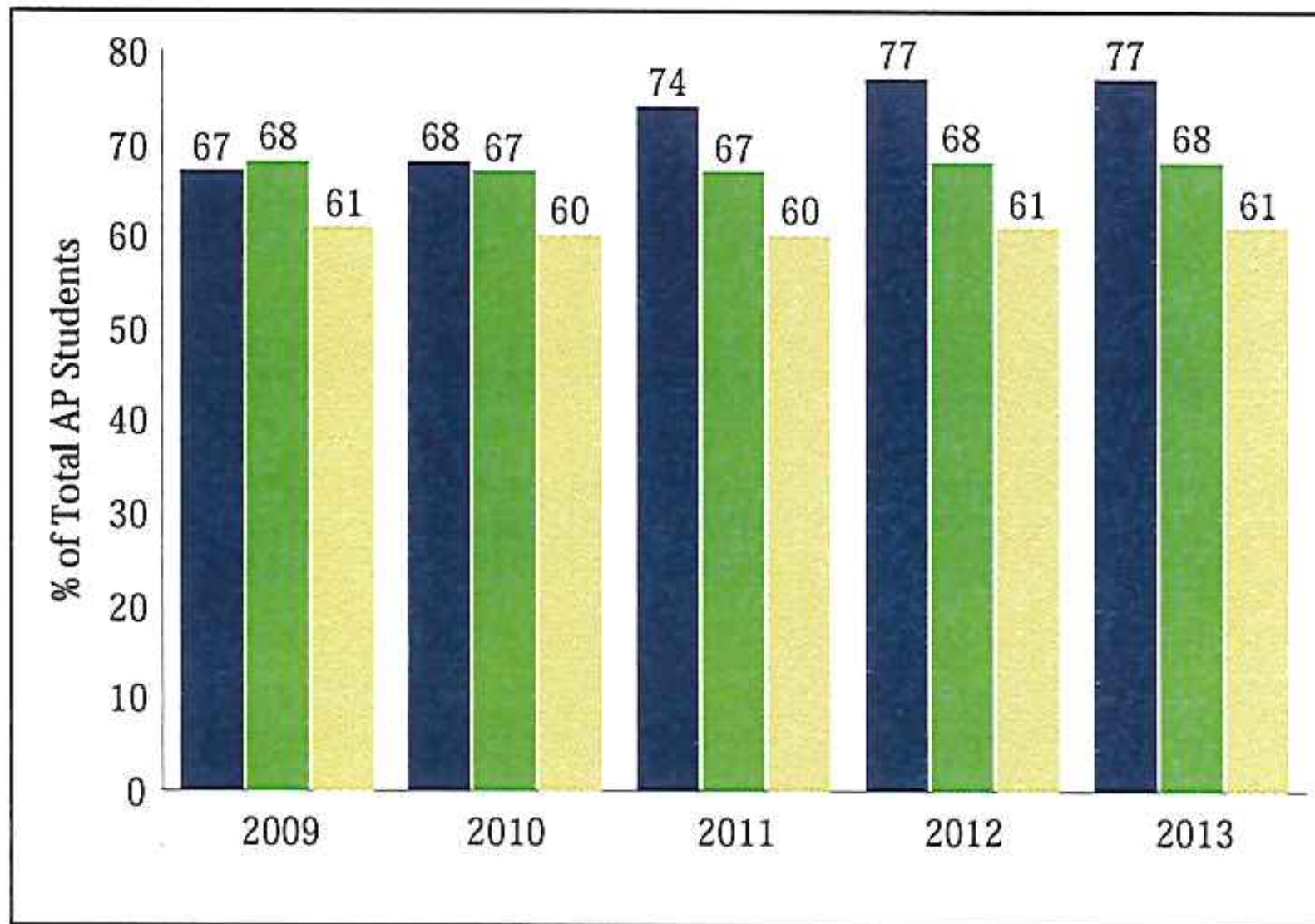
ACT	TOTAL TESTED	COMPOSITE			
Grad Year	District	ACT Benchmark	District	State	National
2006	9	21	21.6	21.8	21
2007	10	21	22	22	21
2008	27	21	23.9	22.2	21
2009	21	21	24.9	22.1	20.9
2010	39	21	25	21.9	21
2011	23	21	24.3	22.3	21.1
2012	23	21	26.1	22.4	21.1
2013	27	21	24.4	22.7	20.9

AP Five-Year School Score Summary 2013



Lewisburg Area High School (392255)

% of Total AP Students with Scores 3+



Lewisburg Area High School (392255) Pennsylvania Global

OVERALL CONCLUSIONS

District Strengths

- **Kelly Elementary and Linntown Elementary both show strong academic performance scores and meet all other indicators in the new School Performance Profile System. Grade 7 PSSA Math scores are outstanding.**
- **Continued strong performances in both SAT and ACT – students graduate from Lewisburg High School ready to enter college.**
- **AP Five-Year School Score Summary evidences the excellent teaching and learning associated with these advanced courses .**

Areas Needing Improvement for Achievement Growth

- **Our performance on the PSSA assessments are solid, but we have not shown strong ‘growth’ scores that are now an integral part of the new accountability measures for the individual schools and the new teacher evaluation system . We must make better progress in growth measures to meet the expectations in the PA Core Standards and the accountability systems.**
- **We need to continue to focus and refine our efforts to customize learning for each student.**