



2015-16 in Review

- ◆ **Compilation of “Summative Assessments” – end of year, end of course, end of academic level, readiness for post-K-12 college and career**
- ◆ **Assessment data allows us to gauge our teaching and learning processes through quantitative measures – but not a reflection of the full and complete learning experiences of our students**
- ◆ **This was our second year using the revised PSSA tests that align with PA Core Standards**
- ◆ **Our students are demonstrating solid, sustained achievement across K-12**

Terra Nova National Achievement Test Results K-2



Kelly Elementary

Kindergarten	Reading	Reading		Kindergarten	Math	Math
	Students	%			Students	%
Mastery	102	79%		Mastery	79	61%
Moderate	20	15%		Moderate	41	32%
On or Above Grade Level	122	94%		On or Above Grade Level	120	93%
Below Level	8	6%		Below Level	10	7%
Total	130	100.0%		Total	130	100.0%

First Grade	Reading	Reading		First Grade	Math	Math
	Students	%			Students	%
Mastery	86	67%		Mastery	58	45%
Moderate	39	30%		Moderate	58	45%
On or Above Grade Level	125	97%		On or Above Grade Level	116	90%
Below Level	4	3%		Below Level	13	10%
Total	129	100.0%		Total	129	100.0%

Second Grade	Reading	Reading		Second Grade	Math	Math
	Students	%			Students	%
Mastery	78	60%		Mastery	83	64%
Moderate	45	35%		Moderate	37	28%
On or Above Grade Level	123	93%		On or Above Grade Level	120	92%
Below Level	7	7%		Below Level	10	8%
Total	130	100.0%		Total	130	100.0%

PSSA PERFORMANCE RESULTS 3-8



Grades 3, 4, 5

Grade	Math	ELA	Science
3rd (133)	105	103	NA
Adv. & Prof.	78% (54%)	77% (61%)	
4th (146)	92	113	129
Adv. & Prof.	63% (47%)	77% (59%)	88% (76%)
5th (160)	124	135	NA
Adv. & Prof.	78% (44%)	84% (62%)	
State Average A/P			

Data Comparisons – “New PSSA” and PA Core

	Math 2015	Math 2016		ELA 2015	ELA 2016	
Grades						
3rd	69%	78%	+9%	76%	77%	+1%
4th	70%	63%	-7%	80%	77%	-3%
5th	73%	78%	+5%	84%	84%	**
Average A/P	70.7%	72.3%		80%	79.3%	
Grade 4 Science	97%	88%	-9%			

Grades 6, 7, 8

Grade	Math	ELA	Science
6th (153)	119	123	NA
Adv. & Prof.	78% (41%)	81% (62%)	
7th (150)	96	119	
Adv. & Prof.	64% (37%)	80% (62%)	NA
8th (140)	99	109	112
Adv. & Prof.	71% (31%)	78% (58%)	80% (58%)
State Average A/P			

Data Comparisons – “New PSSA” and PA Core

	Math 2015	Math 2016		ELA 2015	ELA 2016	
Grades						
6th	71%	78%	+7%	72%	81%	+9%
7th	68%	64%	-4%	78%	80%	+2%
8th	61%	71%	+10%	77%	78%	+1%
Average A/P	66.7%	71%		75.7%	79.6%	
Grade 8 Science	78%	80%	+2%			

Keystone End of Course Exams



Keystone Algebra Exam – Grade 8

	2015	2016
Algebra –Grade 8	Students	Students
	54	48
Advanced/Proficient	54	48
Adv. & Prof.	100%	100%

Keystone End of Course Exams – High School Grade 11 Federal Accountability, State Assessment

Grade 11 Accountability	Class of 2017	Class of 2018
Algebra 1 A/P	79.2%	88.5%
IU Avg. / State Avg.	47% / 68%	
HS Biology A/P	76%	71.4%
IU Avg. / State Avg.	55% / 63%	
HS Literature A/P	84.5%	97%
IU Avg. / State Avg.	66% / 77%	

School Performance Profile



Under PA ESEA Waiver – the School Performance Profile (SPP) has been implemented as an accountability measure of unique School Building Level performance each year. The SPP is also a component of the Educator Effectiveness (teacher evaluation) accountability system.

School Performance Profile - SPP

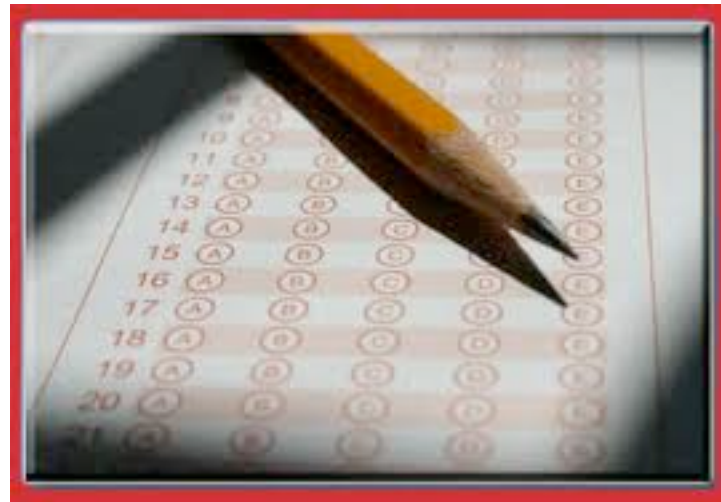
School	2012-2013	2013-2014	2014-15	2015-3016
Kelly Elementary	91.1	94.7	NA	82.5
Linntown Elementary	92.0	89.4	NA	75.4
Donald H. Eichhorn MS	86.4	94.8	NA	78.3
High School	77.8	78.7	78.9	78.8

Components used to calculate Building Level SPP include:

- ◆ Academic Achievement (40%)
- ◆ Closing the Achievement Gap – All Groups (5%)
- ◆ Closing the Achievement Gap – Historically Underperforming Students (5%)
- ◆ Indicators of Academic Growth – PVAAS (40%)
- ◆ Other Academic Indicators (10%)
- ◆ Extra Credit Points for Advanced Achievement (7pts.)

AP Summary 2016

Five-Year School Score

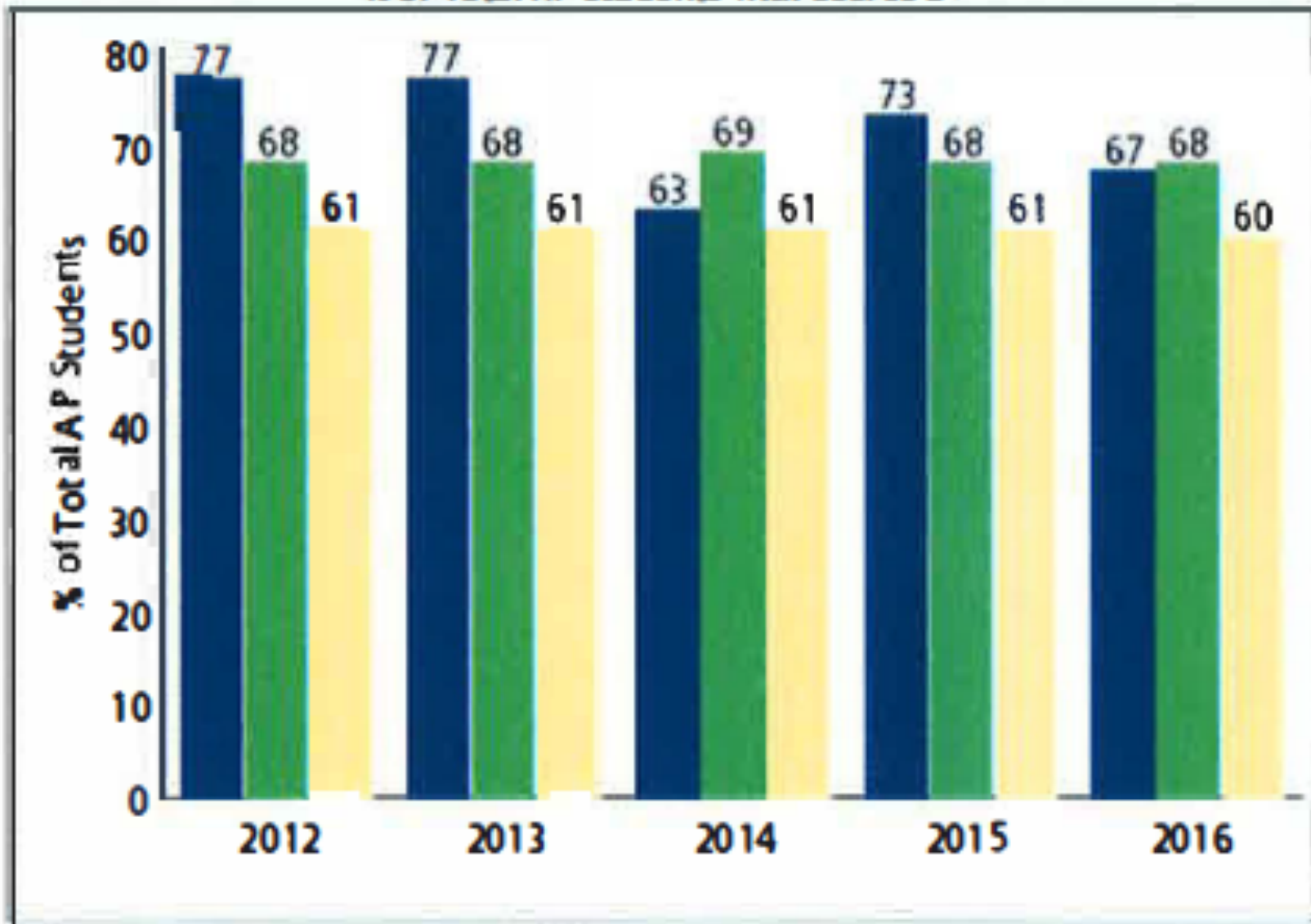


LASD Advanced Placement 2015-16

- ◆ 19 LASD AP Scholars (3 or more with 3.0)
- ◆ 10 AP Scholars with Honors (4 or more 3.2)
- ◆ 14 AP Scholars with Distinction (5 or more 3.5)

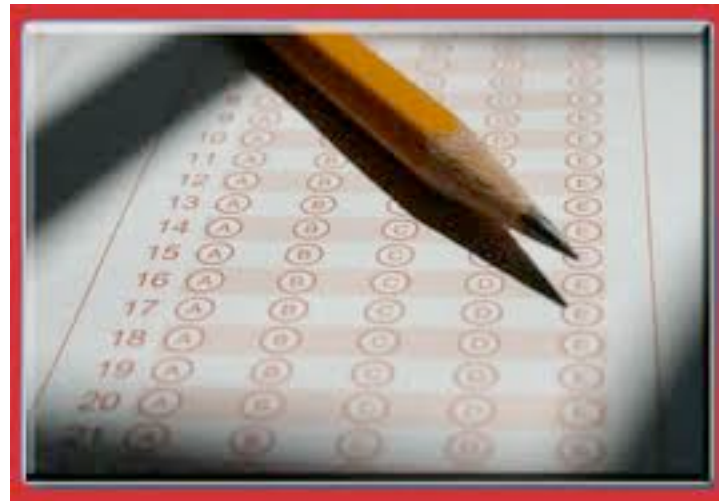
- ◆ 146 LASD students sat for AP Exams
- ◆ 255 AP Exams administered
- ◆ 98 students scoring 3+ on AP Exams
- ◆ 67% of LASD students scored 3+ on one exam
- ◆ 14 different AP Exams administered

% of Total AP Students with Scores 3+



Lewisburg Area High School (392255) **Pennsylvania** **Global**

SAT Results and History 2001 to 2016



SAT Math Results

Year	LAHS Math	State Math	National Math
00-01	525	499	514
01-02	516	500	516
02-03	519	502	519
03-04	517	502	518
04-05	551	503	520
05-06	535	500	518
06-07	527	499	515
07-08	527	501	515
08-09	543	501	515
09-10	542	501	516
10-11	536	501	514
11-12	546	501	514
12-13	550	501	514
13-14	550	504	513
14-15	561	504	511
15-16	559	506	508

SAT Verbal Results (Critical Reading)

	LAHS	State	National
Year	Verbal	Verbal	Verbal
00-01	526	500	506
01-02	512	498	504
02-03	533	500	507
03-04	546	501	508
04-05	550	501	508
05-06	530	493	503
06-07	536	493	503
07-08	539	494	502
08-09	548	493	501
09-10	560	492	501
10-11	546	493	497
11-12	546	491	496
12-13	554	494	496
13-14	546	497	496
14-15	564	499	495
15-16	553	500	494

SAT Writing Results

Year	LAHS Writing	State Writing	National
05-06	511	483	497
06-07	520	482	447
07-08	528	483	494
08-09	537	483	493
09-10	535	480	492
10-11	519	479	489
11-12	528	480	488
12-13	535	482	488
13-14	518	480	487
14-15	541	482	484
15-16	517	481	482

Combined Verbal and Math SAT Scores and Percent Tested

	LAHS	State	National	#	# In	%
Year	Total	Total	Total	Tested	Class	Tested
00-01	1051	999	1020	105	135	77.8%
01-02	1028	998	1020	122	154	79.2%
02-03	1052	1002	1026	101	126	80.2%
03-04	1063	1003	1026	106	135	78.5%
04-05	1101	1004	1028	126	150	84.0%
05-06	1065	993	1018	112	143	78.3%
06-07	1063	992	1017	130	150	86.7%
07-08	1066	995	1017	129	161	80.1%
08-09	1091	994	1016	116	131	88.5%
09-10	1102	993	1017	138	160	86.3%
10-11	1082	994	1011	130	143	90.9%
11-12	1092	992	1010	117	143	81.8%
12-13	1104	998	1010	116	131	89.0%
13-14	1096	1001	1010	99	118	84.0%
14-15	1125	1003	1006	127	144	88.2%
15-16	1180*	1090*	1080*	106	135	78.5%

ACT RESULTS AND HISTORY 2007-2016



ACT RESULTS

ACT	TOTAL TESTED		ENGLISH				MATH		
Grad Year	District	ACT Benchmark	District	State	National	ACT Benchmark	District	State	National
2007	10	18.0	21.5	21.5	20.7	22.0	22.7	21.9	21.0
2008	27	18.0	23.5	21.8	20.6	22.0	23.9	22.3	21.0
2009	21	18.0	24.7	21.7	20.6	22.0	24.3	22.2	21.0
2010	39	18.0	25.4	21.3	20.5	22.0	23.7	22.1	21.0
2011	33	18.0	23.8	21.9	20.6	22.0	24.3	22.6	21.1
2012	24	18.0	26.0	22.0	20.5	22.0	25.8	22.7	21.1
2013	27	18.0	23.9	22.2	20.2	22.0	24.5	23.0	20.9
2014	21	18.0	23.9	22.1	20.3	22.0	25.1	22.8	20.9
2015	31	18.0	26.5	22.5	20.4	22.0	27.0	22.8	20.8
2016	38	18.0	24.8	22.6	20.4	22.0	24.9	23.0	20.8

ACT RESULTS

ACT	TOTAL TESTED		READING				SCIENCE		
		ACT Bench mark	District	State	National	ACT Bench mark	District	State	National
Grad Year	District								
2007	10	21.0	21.9	22.4	21.5	24.0	21.8	22.4	21.0
2008	27	21.0	25.0	22.5	21.4	24.0	23.0	22.5	20.8
2009	21	21.0	25.8	22.4	21.4	24.0	24.3	22.4	20.9
2010	39	21.0	26.0	22.1	21.3	24.0	24.4	21.4	20.9
2011	23	21.0	25.7	22.6	21.3	24.0	23.4	21.8	20.9
2012	23	21.0	25.7	22.6	21.3	24.0	23.4	21.8	20.9
2013	27	21.0	25.0	23.0	23.0	24.0	23.7	22.2	20.9
2014	21	21.0	24.4	23.0	21.3	23.0	25.3	22.2	20.8
2015	31	22.0	26.5	23.2	21.4	23.0	26.3	22.5	20.9
2016	38	22.0	26.0	23.6	21.4	23.0	25.1	22.8	20.9

ACT RESULTS

ACT	TOTAL TESTED	COMPOSITE			
Grad Year	District	ACT Benchmark	District	State	National
2007	10	21	22	22	21
2008	27	21	23.9	22.2	21
2009	21	21	24.9	22.1	20.9
2010	39	21	25	22.9	21
2011	23	21	24.3	22.3	21.1
2012	23	21	26.1	22.4	21.1
2013	27	21	24.4	22.7	20.9
2014	21	21	24.8	22.7	21
2015	31	21	26.8	22.9	21
2016	38	21	25.3	23.1	21

Summary

District Strengths

- **Measures of student achievement indicate our early learners in grades K-2 are evidencing solid foundational skills in literacy and mathematics. (1st year new ELA series, 2nd year math series)**
- **PSSA Scores 3-8 show trajectory of improvement in meeting rigor of new PA Core Standards.**
- **PSSA Scores in grades 3-8 reflect strong academic performance across the District, with all grade levels surpassing the average PA State levels of proficiency for the new tests. In 14 sub tests across grades 3-8, Lewisburg scored first or second rank in 13-14 across CSIU (17 districts).**
- **Indicators of preparation for college and career, including AP, SAT, and ACT scores reflect strong educational programming and the expertise of our professional staff as well as the support of our families and the Lewisburg community. Our SAT and ACT scores exceed state and national averages.**

Our Challenges

- **We continue to work towards improved student performance in the Keystone end of course assessments as a measure of student achievement and growth.**
- **We continue to examine our work at all building levels to address the measurements of “academic growth” for our students, as both demonstrated achievement and growth are part of our teacher evaluation and school accountability systems in PA public education.**